

Datasheet for ABIN674454
anti-NFKBIA antibody (AA 1-120)

3 Images

24 Publications

[Go to Product page](#)

Overview

Quantity:	100 µL
Target:	NFKBIA
Binding Specificity:	AA 1-120
Reactivity:	Human, Mouse, Rat, Cow, Chicken
Host:	Rabbit
Clonality:	Polyclonal
Conjugate:	This NFKBIA antibody is un-conjugated
Application:	Western Blotting (WB), ELISA, Immunohistochemistry (Paraffin-embedded Sections) (IHC (p)), Immunofluorescence (Cultured Cells) (IF (cc)), Immunofluorescence (Paraffin-embedded Sections) (IF (p)), Flow Cytometry (FACS), Immunohistochemistry (Frozen Sections) (IHC (fro))

Product Details

Immunogen:	KLH conjugated synthetic peptide derived from mouse IKB alpha
Isotype:	IgG
Cross-Reactivity:	Chicken, Cow, Human, Mouse, Rat
Purification:	Purified by Protein A.

Target Details

Target:	NFKBIA
Alternative Name:	NFKBIA/IKB alpha (NFKBIA Products)

Target Details

Background:	Synonyms: Nfkbj, AI46215, NF-kappa-B inhibitor alpha, I-kappa-B-alpha, Ikb-alpha, IkappaBalphabet, Nfkbj, Ikba Background: Inhibits the activity of dimeric NF-kappa-B/REL complexes by trapping REL dimers in the cytoplasm through masking of their nuclear localization signals. On cellular stimulation by immune and proinflammatory responses, becomes phosphorylated promoting ubiquitination and degradation, enabling the dimeric RELA to translocate to the nucleus and activate transcription.
Gene ID:	18035
UniProt:	Q9Z1E3
Pathways:	NF-kappaB Signaling , TCR Signaling , TLR Signaling , Fc-epsilon Receptor Signaling Pathway , Activation of Innate immune Response , Cellular Response to Molecule of Bacterial Origin , Maintenance of Protein Location , Hepatitis C , Protein targeting to Nucleus , Toll-Like Receptors Cascades , BCR Signaling

Application Details

Application Notes:	WB 1:300-5000 ELISA 1:500-1000 FCM 1:20-100 IHC-P 1:200-400 IHC-F 1:100-500 IF(IHC-P) 1:50-200 IF(IHC-F) 1:50-200 IF(ICC) 1:50-200
Restrictions:	For Research Use only

Handling

Format:	Liquid
Concentration:	1 µg/µL
Buffer:	0.01M TBS(pH 7.4) with 1 % BSA, 0.02 % Proclin300 and 50 % Glycerol.
Preservative:	ProClin
Precaution of Use:	This product contains ProClin: a POISONOUS AND HAZARDOUS SUBSTANCE, which should be handled by trained staff only.

Handling

Storage: 4 °C, -20 °C

Storage Comment: Shipped at 4°C. Store at -20°C for one year. Avoid repeated freeze/thaw cycles.

Expiry Date: 12 months

Publications

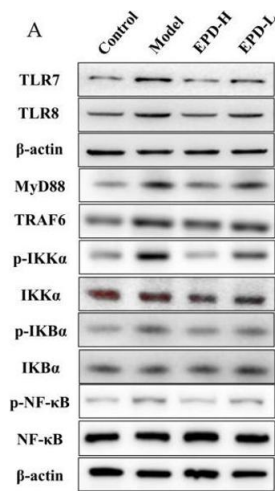
Product cited in: Yang, Cheng, Liu, Liu, Tan, Guan, Guo, Kuang: "Datura Metel L. Ameliorates Imiquimod-Induced Psoriasis-Like Dermatitis and Inhibits Inflammatory Cytokines Production through TLR7/8-MyD88-NF-κB-NLRP3 Inflammasome Pathway." in: **Molecules (Basel, Switzerland)**, Vol. 24, Issue 11, (2019) ([PubMed](#)).

Wang, Liu, Wang, Wang, Tang, Jiang: "Src Promotes Metastasis of Human Non-Small Cell Lung Cancer Cells through Fn14-Mediated NF-κB Signaling." in: **Medical science monitor : international medical journal of experimental and clinical research**, Vol. 24, pp. 1282-1294, (2018) ([PubMed](#)).

Liu, Zhang, Han, Wang, Liu, Zhang, Zhou, Xiang: "Inhibition of BTK protects lungs from trauma-hemorrhagic shock-induced injury in rats." in: **Molecular medicine reports**, Vol. 16, Issue 1, pp. 192-200, (2017) ([PubMed](#)).

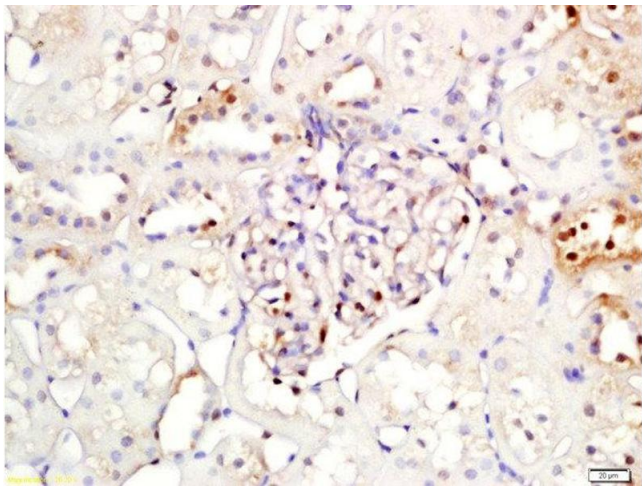
Sun, Yang, Zhang, Zhao: "Esculentoside A ameliorates cecal ligation and puncture-induced acute kidney injury in rats." in: **Experimental animals**, (2017) ([PubMed](#)).

There are more publications referencing this product on: [Product page](#)



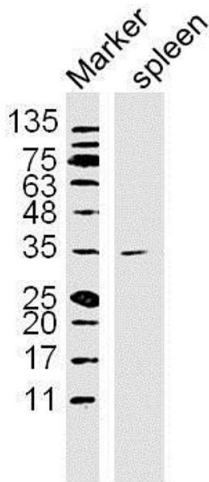
Western Blotting

Image 1. EPD suppressed the activation of the Toll-like receptor 7-myeloid differentiation primary response gene 88-nuclear factor-κB (TLR7/8-MyD88-NF-κB) signaling pathways. (A) The protein expressions of TLR7, TLR8, TRAF6, MyD88, p-IKKα, IKKα, p-IKBα, IKBα, p-NF-κB, and NF-κB were detected using Western blot assay. (B-H) The quantification of protein levels of TLR7, TLR8, TLAF6, MyD88, p-IKKα, IKKα, p-IKBα, IKBα, p-NF-κB, and NF-κB. Values are presented as the means ± SD of three independent experiments. ** P < 0.01 vs. control group, #P < 0.05, ##P < 0.01 vs. model group. - figure provided by CiteAb. Source: PMID31181689



Immunohistochemistry (Paraffin-embedded Sections)

Image 2. Formalin-fixed and paraffin embedded rat kidney labeled with Rabbit Anti-NFKBIA/IKB alpha Polyclonal Antibody, Unconjugated (ABIN674454) at 1:200 followed by conjugation to the secondary antibody and DAB staining



Western Blotting

Image 3. Lane 1: Mouse Spleen lysates probed with NFKBIA/IKB alpha Polyclonal Antibody, Unconjugated at 1:300 overnight at 4°C. Followed by a conjugated secondary antibody at 1:10000 for 60 min at 37°C.