

Datasheet for ABIN6744548
anti-c-Rel antibody (AA 251-300)[Go to Product page](#)

1 Image

Overview

| | |
|----------------------|---|
| Quantity: | 100 µL |
| Target: | c-Rel |
| Binding Specificity: | AA 251-300 |
| Reactivity: | Human, Mouse, Rat, Dog, Horse, Cow, Pig |
| Host: | Rabbit |
| Clonality: | Polyclonal |
| Conjugate: | This c-Rel antibody is un-conjugated |
| Application: | Western Blotting (WB) |

Product Details

| | |
|-----------------------|---|
| Immunogen: | Synthetic peptide located between aa251-300 of mouse Rel (A4QPD3, NP_033070). Percent identity by BLAST analysis: Mouse, Rat (100%), Marmoset, Rabbit, Opossum, Guinea pig (92%), Human, Gorilla, Gibbon, Monkey, Galago, Elephant, Dog, Bovine, Horse, Pig (85%), Bat (84%). Type of Immunogen: Synthetic peptide |
| Specificity: | Mouse REL / c-Rel |
| Predicted Reactivity: | Percent identity by BLAST analysis: Mouse, Rat (100%) Rabbit, Guinea pig (92%) Human, Dog, Bovine, Horse, Pig (85%). |
| Purification: | Immunoaffinity purified |

Target Details

| | |
|-------------------|--|
| Target: | c-Rel |
| Alternative Name: | REL / C-Rel (c-Rel Products) |
| Background: | Name/Gene ID: REL Synonyms: REL, C-Rel, C-Rel proto-oncogene protein, I-Rel, Proto-oncogene c-Rel |
| Gene ID: | 5966 |
| NCBI Accession: | NP_033070 |
| UniProt: | Q04864 |

Application Details

| | |
|--------------------|--|
| Application Notes: | Approved: WB (0.2 - 1 µg/mL) Usage: Western Blot: Suggested dilution at 1 µg/mL in 5 % skim milk / PBS buffer, and HRP conjugated anti-Rabbit IgG should be diluted in 1: 50,000 - 100,000 as secondary antibody. |
| Comment: | Target Species of Antibody: Mouse |
| Restrictions: | For Research Use only |

Handling

| | |
|------------------|---|
| Format: | Lyophilized |
| Reconstitution: | Distilled water |
| Concentration: | Lot specific |
| Buffer: | Lyophilized from PBS with 2 % sucrose |
| Handling Advice: | Avoid repeat freeze-thaw cycles. |
| Storage: | 4 °C, -20 °C |
| Storage Comment: | Long term: -20°C, the use of 50% glycerol is recommended if storing aliquots in -20°C for long term use (up to 1 year) Short term (less than 1 week): 4°C. Avoid freeze-thaw cycles. |

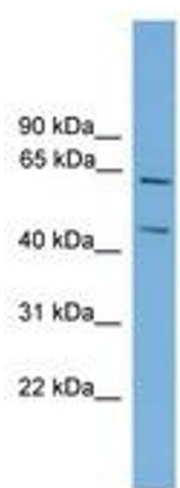


Image 1.