

Datasheet for ABIN6744555  
**anti-ZFY1 antibody (AA 251-300)**



[Go to Product page](#)

1 Image

## Overview

Quantity:	100 µL
Target:	ZFY1
Binding Specificity:	AA 251-300
Reactivity:	Mouse
Host:	Rabbit
Clonality:	Polyclonal
Conjugate:	This ZFY1 antibody is un-conjugated
Application:	Western Blotting (WB)

## Product Details

Immunogen:	Synthetic peptide located between aa251-300 of mouse Zfy1 (P10925, NP_033596). Percent identity by BLAST analysis: Mouse (100%).  Type of Immunogen: Synthetic peptide
Specificity:	Mouse ZFY1
Predicted Reactivity:	Percent identity by BLAST analysis: Mouse (100%).
Purification:	Immunoaffinity purified

## Target Details

Target:	ZFY1
Alternative Name:	Zfy1 ( <a href="#">ZFY1 Products</a> )

## Target Details

---

Background:	Name/Gene ID: Zfy1
	Synonyms: Zfy1, Y-linked zinc finger protein 1, Zfy-1
Gene ID:	22767
NCBI Accession:	<a href="#">NP_033596</a>
UniProt:	<a href="#">P10925</a>

## Application Details

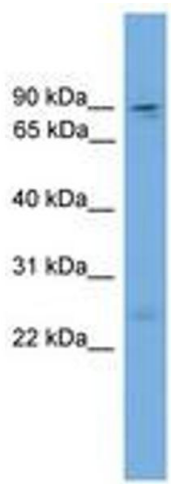
---

Application Notes:	Approved: WB (0.2 - 1 µg/mL)
	Usage: Western Blot: Suggested dilution at 1 µg/mL in 5 % skim milk / PBS buffer, and HRP conjugated anti-Rabbit IgG should be diluted in 1: 50,000 - 100,000 as secondary antibody.
Comment:	Target Species of Antibody: Mouse
Restrictions:	For Research Use only

## Handling

---

Format:	Lyophilized
Reconstitution:	Distilled water
Concentration:	Lot specific
Buffer:	Lyophilized from PBS with 2 % sucrose
Handling Advice:	Avoid repeat freeze-thaw cycles.
Storage:	4 °C, -20 °C
Storage Comment:	Long term: -20°C, the use of 50% glycerol is recommended if storing aliquots in -20°C for long term use (up to 1 year) Short term (less than 1 week): 4°C. Avoid freeze-thaw cycles.



**Image 1.**