

Datasheet for ABIN6744563
anti-FOXF1 antibody (AA 226-275)[Go to Product page](#)

1 Image

Overview

Quantity:	100 µL
Target:	FOXF1
Binding Specificity:	AA 226-275
Reactivity:	Mouse, Rat
Host:	Rabbit
Clonality:	Polyclonal
Conjugate:	This FOXF1 antibody is un-conjugated
Application:	Western Blotting (WB)

Product Details

Immunogen:	Synthetic peptide located between aa226-275 of mouse Foxf1 (Q61080, NP_034556). Percent identity by BLAST analysis: Mouse, Rat (100%), Human, Gibbon, Monkey, Galago, Marmoset, Dog, Horse, Guinea pig (92%), Gorilla, Elephant, Bovine, Rabbit, Zebra finch (85%). Type of Immunogen: Synthetic peptide
Specificity:	Mouse FOXF1
Predicted Reactivity:	Percent identity by BLAST analysis:
Purification:	Immunoaffinity purified

Target Details

Target:	FOXF1
---------	-------

Target Details

Alternative Name:	FOXF1 (FOXF1 Products)
Background:	Name/Gene ID: FOXF1 Family: Transcription factor Synonyms: FOXF1, ACDMPV, Forkhead-related activator 1, FKHL5, Forkhead box F1, Forkhead box protein F1, Forkhead-related protein FKHL5, FREAC-1, FREAC1
Gene ID:	2294
NCBI Accession:	NP_034556
UniProt:	Q12946
Pathways:	Regulation of Leukocyte Mediated Immunity , Regulation of Muscle Cell Differentiation , Positive Regulation of Immune Effector Process

Application Details

Application Notes:	Approved: WB (0.2 - 1 µg/mL) Usage: Western Blot: Suggested dilution at 1 µg/mL in 5 % skim milk / PBS buffer, and HRP conjugated anti-Rabbit IgG should be diluted in 1: 50,000 - 100,000 as secondary antibody.
Comment:	Target Species of Antibody: Mouse
Restrictions:	For Research Use only

Handling

Format:	Lyophilized
Reconstitution:	Distilled water
Concentration:	Lot specific
Buffer:	Lyophilized from PBS with 2 % sucrose
Handling Advice:	Avoid repeat freeze-thaw cycles.
Storage:	4 °C, -20 °C
Storage Comment:	Long term: -20°C, the use of 50% glycerol is recommended if storing aliquots in -20°C for long term use (up to 1 year) Short term (less than 1 week): 4°C. Avoid freeze-thaw cycles.

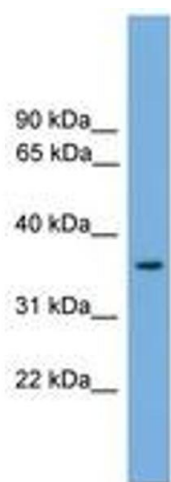


Image 1.