

Datasheet for ABIN6744573
anti-NKX2-6 antibody (AA 74-123)



[Go to Product page](#)

1 Image

Overview

Quantity:	100 µL
Target:	NKX2-6
Binding Specificity:	AA 74-123
Reactivity:	Mouse
Host:	Rabbit
Clonality:	Polyclonal
Conjugate:	This NKX2-6 antibody is un-conjugated
Application:	Western Blotting (WB)

Product Details

Immunogen:	Synthetic peptide located between aa74-123 of mouse Nkx2-6 (P43688, NP_035050). Percent identity by BLAST analysis: Mouse (100%). Type of Immunogen: Synthetic peptide
Specificity:	Mouse NKX2-6
Predicted Reactivity:	Percent identity by BLAST analysis: Mouse (100%).
Purification:	Immunoaffinity purified

Target Details

Target:	NKX2-6
Alternative Name:	NKX2-6 (NKX2-6 Products)

Target Details

Background: Name/Gene ID: NKX2-6

Synonyms: NKX2-6, CSX2, Homeobox protein NKX2.6, Homeobox protein NK2 homolog F, Homeobox protein Nkx-2.6, NKX4-2, NKX2F, Tinman paralog, NK2 homeobox 6

Gene ID: 137814

NCBI Accession: [NP_035050](#)

UniProt: [A6NCS4](#)

Application Details

Application Notes: Approved: WB (0.2 - 1 µg/mL)

Usage: Western Blot: Suggested dilution at 1 µg/mL in 5 % skim milk / PBS buffer, and HRP conjugated anti-Rabbit IgG should be diluted in 1: 50,000 - 100,000 as secondary antibody.

Comment: Target Species of Antibody: Mouse

Restrictions: For Research Use only

Handling

Format: Lyophilized

Reconstitution: Distilled water

Concentration: Lot specific

Buffer: Lyophilized from PBS with 2 % sucrose

Handling Advice: Avoid repeat freeze-thaw cycles.

Storage: 4 °C, -20 °C

Storage Comment: Long term: -20°C, the use of 50% glycerol is recommended if storing aliquots in -20°C for long term use (up to 1 year)

Short term (less than 1 week): 4°C. Avoid freeze-thaw cycles.

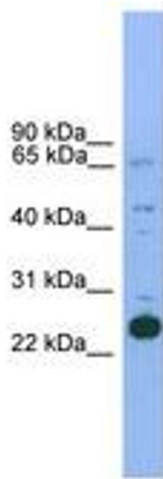


Image 1.