



[Go to Product page](#)

Datasheet for ABIN6744580

anti-BARX Homeobox 2 antibody (AA 31-80)

1 Image

Overview

Quantity:	100 µL
Target:	BARX Homeobox 2 (BARX2)
Binding Specificity:	AA 31-80
Reactivity:	Rat, Mouse, Human
Host:	Rabbit
Clonality:	Polyclonal
Conjugate:	This BARX Homeobox 2 antibody is un-conjugated
Application:	Western Blotting (WB)

Product Details

Immunogen:	Synthetic peptide located between aa31-80 of mouse Barx2 (O08686, NP_038828). Percent identity by BLAST analysis: Human, Chimpanzee, Mouse, Rat (100%), Gorilla, Gibbon, Monkey, Galago, Marmoset, Hamster, Elephant, Panda, Dog, Bovine, Bat, Rabbit, Horse, Pig, Opossum, Guinea pig, Turkey, Chicken, Stickleback (92%). Type of Immunogen: Synthetic peptide
Specificity:	Mouse BARX2
Predicted Reactivity:	Percent identity by BLAST analysis: Human, Mouse, Rat, Dog, Bovine, Rabbit, Guinea pig, Chicken (92%).
Purification:	Immunoaffinity purified

Target Details

Target:	BARX Homeobox 2 (BARX2)
Alternative Name:	BARX2 (BARX2 Products)
Background:	Name/Gene ID: BARX2 Synonyms: BARX2, BarH-like homeobox 2, BARX homeobox 2, Homeobox protein BarH-like 2
Gene ID:	8538
NCBI Accession:	NP_038828
UniProt:	Q9UMQ3

Application Details

Application Notes:	Approved: WB (0.2 - 1 µg/mL) Usage: Western Blot: Suggested dilution at 1 µg/mL in 5 % skim milk / PBS buffer, and HRP conjugated anti-Rabbit IgG should be diluted in 1: 50,000 - 100,000 as secondary antibody.
Comment:	Target Species of Antibody: Mouse
Restrictions:	For Research Use only

Handling

Format:	Lyophilized
Reconstitution:	Distilled water
Concentration:	Lot specific
Buffer:	Lyophilized from PBS with 2 % sucrose
Handling Advice:	Avoid repeat freeze-thaw cycles.
Storage:	4 °C, -20 °C
Storage Comment:	Long term: -20°C, the use of 50% glycerol is recommended if storing aliquots in -20°C for long term use (up to 1 year) Short term (less than 1 week): 4°C. Avoid freeze-thaw cycles.

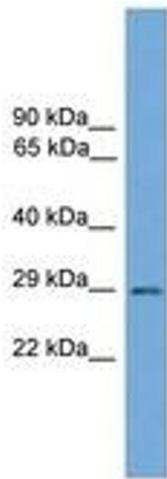


Image 1.