



Datasheet for ABIN6744584
anti-NR4A3 antibody (AA 551-600)



[Go to Product page](#)

1 Image

Overview

Quantity:	100 µL
Target:	NR4A3
Binding Specificity:	AA 551-600
Reactivity:	Mouse, Rat, Rabbit, Cow
Host:	Rabbit
Clonality:	Polyclonal
Conjugate:	This NR4A3 antibody is un-conjugated
Application:	Western Blotting (WB)

Product Details

Immunogen:	Synthetic peptide located between aa551-600 of mouse Nr4a3 (Q9QZB6, NP_056558). Percent identity by BLAST analysis: Mouse, Rat (100%), Human, Gorilla, Gibbon, Monkey, Galago, Marmoset, Elephant, Panda, Dog, Bat, Horse, Guinea pig (92%), Bovine, Rabbit (85%). Type of Immunogen: Synthetic peptide
Specificity:	Mouse NR4A3
Predicted Reactivity:	Percent identity by BLAST analysis: Mouse, Rat (100%) Human, Dog, Horse, Guinea pig (92%) Bovine, Rabbit (85%).
Purification:	Immunoaffinity purified

Target Details

Target:	NR4A3
Alternative Name:	Nor-1 / NR4A3 (NR4A3 Products)
Background:	Name/Gene ID: NR4A3 Subfamily: NR4 Nerve growth factor-like Family: NHR Synonyms: NR4A3, CHN, MINOR, NOR1, Neuron-derived orphan receptor, Nuclear hormone receptor NOR-1, Nor-1, CSMF, Orphan receptor nor1, TEC receptor
Gene ID:	8013
NCBI Accession:	NP_056558
UniProt:	Q92570
Pathways:	Fc-epsilon Receptor Signaling Pathway , Nuclear Receptor Transcription Pathway , Steroid Hormone Mediated Signaling Pathway

Application Details

Application Notes:	Approved: WB (0.2 - 1 µg/mL) Usage: Western Blot: Suggested dilution at 1 µg/mL in 5 % skim milk / PBS buffer, and HRP conjugated anti-Rabbit IgG should be diluted in 1: 50,000 - 100,000 as secondary antibody.
Comment:	Target Species of Antibody: Mouse
Restrictions:	For Research Use only

Handling

Format:	Lyophilized
Reconstitution:	Distilled water
Concentration:	Lot specific
Buffer:	Lyophilized from PBS with 2 % sucrose
Handling Advice:	Avoid repeat freeze-thaw cycles.
Storage:	4 °C,-20 °C
Storage Comment:	Long term: -20°C, the use of 50% glycerol is recommended if storing aliquots in -20°C for long

Handling

term use (up to 1 year)

Short term (less than 1 week): 4°C. Avoid freeze-thaw cycles.

Images

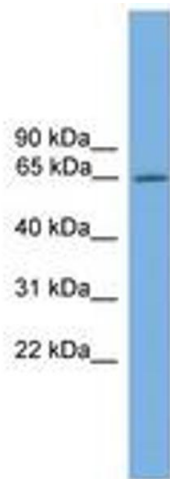


Image 1.