



[Go to Product page](#)

Datasheet for ABIN6744590
anti-IRX5 antibody (AA 191-240)

1 Image

Overview

Quantity:	100 µL
Target:	IRX5
Binding Specificity:	AA 191-240
Reactivity:	Mouse, Rat, Guinea Pig, Horse, Rabbit, Bat
Host:	Rabbit
Clonality:	Polyclonal
Conjugate:	This IRX5 antibody is un-conjugated
Application:	Western Blotting (WB)

Product Details

Immunogen:	Synthetic peptide located between aa191-240 of mouse Irx5 (Q9JKQ4, NP_061296). Percent identity by BLAST analysis: Mouse, Rat, Bat, Horse (100%), Human, Gorilla, Gibbon, Monkey, Galago, Marmoset, Elephant, Bovine (92%), Panda, Dog (91%), Rabbit, Opossum, Guinea pig (85%). Type of Immunogen: Synthetic peptide
Specificity:	Mouse IRX5
Predicted Reactivity:	Percent identity by BLAST analysis: Mouse, Rat (100%) Human, Bovine (92%) Dog (91%) Rabbit, Guinea pig (85%).
Purification:	Immunoaffinity purified

Target Details

Target:	IRX5
Alternative Name:	IRX5 (IRX5 Products)
Background:	Name/Gene ID: IRX5 Synonyms: IRX5, IRX2A, Homeodomain protein IRX-2A, Iroquois homeobox 5, Iroquois homeobox protein 5, HMMS, Homeodomain protein IRXB2, IRX-2a, IRXB2
Gene ID:	10265
NCBI Accession:	NP_061296
UniProt:	P78411

Application Details

Application Notes:	Approved: WB (0.2 - 1 µg/mL) Usage: Western Blot: Suggested dilution at 1 µg/mL in 5 % skim milk / PBS buffer, and HRP conjugated anti-Rabbit IgG should be diluted in 1: 50,000 - 100,000 as secondary antibody.
Comment:	Target Species of Antibody: Mouse
Restrictions:	For Research Use only

Handling

Format:	Lyophilized
Reconstitution:	Distilled water
Concentration:	Lot specific
Buffer:	Lyophilized from PBS with 2 % sucrose
Handling Advice:	Avoid repeat freeze-thaw cycles.
Storage:	4 °C, -20 °C
Storage Comment:	Long term: -20°C, the use of 50% glycerol is recommended if storing aliquots in -20°C for long term use (up to 1 year) Short term (less than 1 week): 4°C. Avoid freeze-thaw cycles.

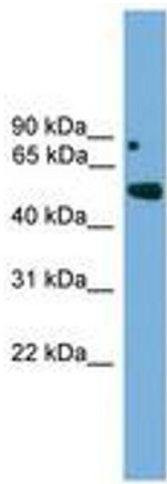


Image 1.