



Datasheet for ABIN6744601 anti-ELP4 antibody (AA 101-150)



[Go to Product page](#)

1 Image

Overview

Quantity:	100 µL
Target:	ELP4
Binding Specificity:	AA 101-150
Reactivity:	Mouse
Host:	Rabbit
Clonality:	Polyclonal
Conjugate:	This ELP4 antibody is un-conjugated
Application:	Western Blotting (WB)

Product Details

Immunogen:	Synthetic peptide located between aa101-150 of mouse Elp4 (Q9ER73, NP_076365). Percent identity by BLAST analysis: Mouse (100%), Rat (92%). Type of Immunogen: Synthetic peptide
Specificity:	Mouse ELP4
Predicted Reactivity:	Percent identity by BLAST analysis: Mouse (100%).
Purification:	Immunoaffinity purified

Target Details

Target:	ELP4
Alternative Name:	ELP4 (ELP4 Products)

Target Details

Background:	Name/Gene ID: ELP4 Synonyms: ELP4, C11orf19, DJ68P15A.1, Elongation protein 4 homolog, Elongator complex protein 4, PAX6 neighbor gene protein, PAX6NEB, PAXNEB, HELP4
Gene ID:	26610
NCBI Accession:	NP_076365
UniProt:	Q96EB1

Application Details

Application Notes:	Approved: WB (0.2 - 1 µg/mL) Usage: Western Blot: Suggested dilution at 1 µg/mL in 5 % skim milk / PBS buffer, and HRP conjugated anti-Rabbit IgG should be diluted in 1: 50,000 - 100,000 as secondary antibody.
Comment:	Target Species of Antibody: Mouse
Restrictions:	For Research Use only

Handling

Format:	Lyophilized
Reconstitution:	Distilled water
Concentration:	Lot specific
Buffer:	Lyophilized from PBS with 2 % sucrose
Handling Advice:	Avoid repeat freeze-thaw cycles.
Storage:	4 °C,-20 °C
Storage Comment:	Long term: -20°C, the use of 50% glycerol is recommended if storing aliquots in -20°C for long term use (up to 1 year) Short term (less than 1 week): 4°C. Avoid freeze-thaw cycles.

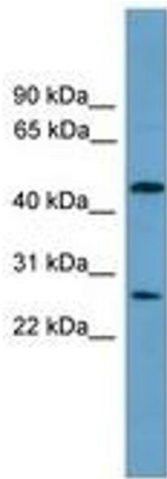


Image 1.