



[Go to Product page](#)

Datasheet for ABIN6744602

anti-TSC22D4 antibody (AA 241-290)

1 Image

Overview

Quantity:	100 µL
Target:	TSC22D4
Binding Specificity:	AA 241-290
Reactivity:	Rat, Mouse
Host:	Rabbit
Clonality:	Polyclonal
Conjugate:	This TSC22D4 antibody is un-conjugated
Application:	Western Blotting (WB)

Product Details

Immunogen:	Synthetic peptide located between aa241-290 of mouse Tsc22d4 (Q99PD5, NP_076399). Percent identity by BLAST analysis: Mouse, Rat (100%), Hamster (83%). Type of Immunogen: Synthetic peptide
Specificity:	Mouse TSC22D4
Predicted Reactivity:	Percent identity by BLAST analysis: Mouse, Rat (100%).
Purification:	Immunoaffinity purified

Target Details

Target:	TSC22D4
Alternative Name:	THG-1 / TSC22D4 (TSC22D4 Products)

Target Details

Background:	Name/Gene ID: TSC22D4 Synonyms: TSC22D4, THG1, TSC22 domain family 4, TSC22 domain family, member 4, TILZ2, TSC22 domain family protein 4, THG-1, Tsc-22-like protein THG-1
Gene ID:	81628
NCBI Accession:	NP_076399
UniProt:	Q9Y3Q8

Application Details

Application Notes:	Approved: WB (0.2 - 1 µg/mL) Usage: Western Blot: Suggested dilution at 0.25 µg/mL in 5 % skim milk / PBS buffer, and HRP conjugated anti-Rabbit IgG should be diluted in 1: 50,000 - 100,000 as secondary antibody.
Comment:	Target Species of Antibody: Mouse
Restrictions:	For Research Use only

Handling

Format:	Lyophilized
Reconstitution:	Distilled water
Concentration:	Lot specific
Buffer:	Lyophilized from PBS with 2 % sucrose
Handling Advice:	Avoid repeat freeze-thaw cycles.
Storage:	4 °C, -20 °C
Storage Comment:	Long term: -20°C, the use of 50% glycerol is recommended if storing aliquots in -20°C for long term use (up to 1 year) Short term (less than 1 week): 4°C. Avoid freeze-thaw cycles.

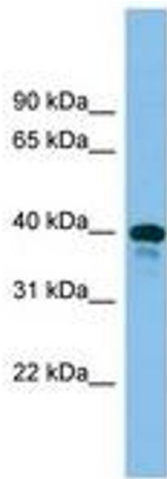


Image 1.