

Datasheet for ABIN6744611  
**anti-NR5A2 + LRH1 antibody (C-Term)**[Go to Product page](#)

## 1 Image

## Overview

Quantity:	100 µL
Target:	NR5A2 + LRH1 (NR5A2)
Binding Specificity:	C-Term
Reactivity:	Human, Rat, Mouse, Cow, Guinea Pig, Sheep, Dog, Horse, Zebrafish (Danio rerio), Rabbit, Pig
Host:	Rabbit
Clonality:	Polyclonal
Conjugate:	This NR5A2 + LRH1 antibody is un-conjugated
Application:	Western Blotting (WB)

## Product Details

Immunogen:	Synthetic peptide from C-Terminus of mouse Nr5a2 (P45448, NP_109601). Percent identity by BLAST analysis: Mouse, Rat (100%), Rabbit, Pig, Xenopus, Stickleback, Medaka, Zebrafish (83%), Human (78%).  Type of Immunogen: Synthetic peptide
Specificity:	Mouse NR5A2
Predicted Reactivity:	Percent identity by BLAST analysis: Mouse, Rat (100%) Xenopus, Zebrafish (83%).
Purification:	Immunoaffinity purified

## Target Details

Target:	NR5A2 + LRH1 (NR5A2)
---------	----------------------

## Target Details

Alternative Name:	NR5A2 / LRH-1 ( <a href="#">NR5A2 Products</a> )
Background:	Name/Gene ID: NR5A2 Subfamily: NR5 Fushi tarazu-like Family: NHR  Synonyms: NR5A2, B1F, B1F2, B1-binding factor, CPF, CYP7A promoter-binding factor, FTZ-F1beta, FTF, Liver receptor homolog 1, LRH1, LRH-1, HB1F, HB1F-2, Nuclear receptor phr-1, FTZ-F1, Liver receptor homolog-1, Nuclear receptor NR5A2, Receptor phr
Gene ID:	2494
NCBI Accession:	<a href="#">NP_109601</a>
UniProt:	<a href="#">O00482</a>
Pathways:	<a href="#">Nuclear Receptor Transcription Pathway</a> , <a href="#">Steroid Hormone Mediated Signaling Pathway</a>

## Application Details

Application Notes:	Approved: WB (0.2 - 1 µg/mL)  Usage: Western Blot: Suggested dilution at 1 µg/mL in 5 % skim milk / PBS buffer, and HRP conjugated anti-Rabbit IgG should be diluted in 1: 50,000 - 100,000 as secondary antibody.
Comment:	Target Species of Antibody: Mouse
Restrictions:	For Research Use only

## Handling

Format:	Lyophilized
Reconstitution:	Distilled water
Concentration:	Lot specific
Buffer:	Lyophilized from PBS with 2 % sucrose
Handling Advice:	Avoid repeat freeze-thaw cycles.
Storage:	4 °C, -20 °C
Storage Comment:	Long term: -20°C, the use of 50% glycerol is recommended if storing aliquots in -20°C for long term use (up to 1 year)

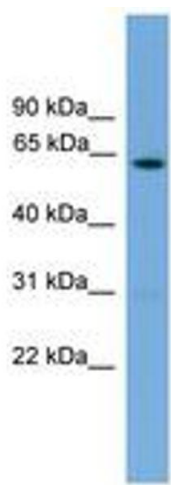
Handling

---

Short term (less than 1 week): 4°C. Avoid freeze-thaw cycles.

Images

---



**Image 1.**