

Datasheet for ABIN6744624
anti-ONECUT3 antibody (AA 381-430)[Go to Product page](#)

1 Image

Overview

Quantity:	100 µL
Target:	ONECUT3
Binding Specificity:	AA 381-430
Reactivity:	Human, Mouse, Cow, Pig, Dog, Rat, Monkey, Zebrafish (Danio rerio)
Host:	Rabbit
Clonality:	Polyclonal
Conjugate:	This ONECUT3 antibody is un-conjugated
Application:	Western Blotting (WB)

Product Details

Immunogen:	Synthetic peptide located between aa381-430 of mouse Onecut3 (Q8K557, NP_631972). Percent identity by BLAST analysis: Human, Gorilla, Monkey, Galago, Mouse, Rat, Dog, Bovine, Pig (100%), Opossum (92%), Zebra finch, Platypus (85%). Type of Immunogen: Synthetic peptide
Specificity:	Mouse ONECUT3
Predicted Reactivity:	Percent identity by BLAST analysis: Dog, Bovine, Pig (100%).
Purification:	Immunoaffinity purified

Target Details

Target:	ONECUT3
---------	---------

Target Details

Alternative Name:	ONECUT3 / OC3 (ONECUT3 Products)
Background:	Name/Gene ID: ONECUT3 Synonyms: ONECUT3, OC-3, OC3, One cut homeobox 3, One cut domain family member 3, Transcription factor ONECUT-3
Gene ID:	390874
NCBI Accession:	NP_631972
UniProt:	O60422

Application Details

Application Notes:	Approved: WB (0.2 - 1 µg/mL) Usage: Western Blot: Suggested dilution at 1 µg/mL in 5 % skim milk / PBS buffer, and HRP conjugated anti-Rabbit IgG should be diluted in 1: 50,000 - 100,000 as secondary antibody.
Comment:	Target Species of Antibody: Mouse
Restrictions:	For Research Use only

Handling

Format:	Lyophilized
Reconstitution:	Distilled water
Concentration:	Lot specific
Buffer:	Lyophilized from PBS with 2 % sucrose
Handling Advice:	Avoid repeat freeze-thaw cycles.
Storage:	4 °C, -20 °C
Storage Comment:	Long term: -20°C, the use of 50% glycerol is recommended if storing aliquots in -20°C for long term use (up to 1 year) Short term (less than 1 week): 4°C. Avoid freeze-thaw cycles.

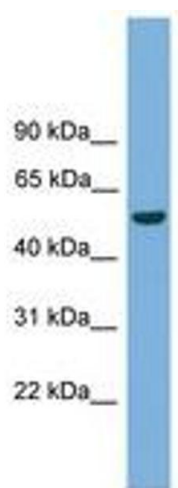


Image 1.