



Datasheet for ABIN6744635
anti-ZNF496 antibody (AA 411-460)



[Go to Product page](#)

1 Image

Overview

Quantity:	100 µL
Target:	ZNF496
Binding Specificity:	AA 411-460
Reactivity:	Mouse, Rat
Host:	Rabbit
Clonality:	Polyclonal
Conjugate:	This ZNF496 antibody is un-conjugated
Application:	Western Blotting (WB)

Product Details

Immunogen:	Synthetic peptide located between aa411-460 of mouse Zkscan17 (Q5SX15, NP_766529). Percent identity by BLAST analysis: Galago, Mouse, Rat (100%), Human, Gorilla, Monkey, Marmoset, Sheep, Elephant, Panda, Dog, Bovine, Horse, Pig (92%), Bat (85%). Type of Immunogen: Synthetic peptide
Specificity:	Mouse ZNF496
Predicted Reactivity:	Percent identity by BLAST analysis:
Purification:	Immunoaffinity purified

Target Details

Target:	ZNF496
---------	--------

Target Details

Alternative Name: ZNF496 / NZIP1 ([ZNF496 Products](#))

Background: Name/Gene ID: ZNF496
Family: Zinc Finger

Synonyms: ZNF496, ZFP496, Zinc finger protein 496, ZKSCAN17, ZSCAN49, NIZP1

Gene ID: 84838

NCBI Accession: [NP_766529](#)

UniProt: [Q96IT1](#)

Application Details

Application Notes: Approved: WB (0.2 - 1 µg/mL)

Usage: Western Blot: Suggested dilution at 1 µg/mL in 5 % skim milk / PBS buffer, and HRP conjugated anti-Rabbit IgG should be diluted in 1: 50,000 - 100,000 as secondary antibody.

Comment: Target Species of Antibody: Mouse

Restrictions: For Research Use only

Handling

Format: Lyophilized

Reconstitution: Distilled water

Concentration: Lot specific

Buffer: Lyophilized from PBS with 2 % sucrose

Handling Advice: Avoid repeat freeze-thaw cycles.

Storage: 4 °C, -20 °C

Storage Comment: Long term: -20°C, the use of 50% glycerol is recommended if storing aliquots in -20°C for long term use (up to 1 year)

Short term (less than 1 week): 4°C. Avoid freeze-thaw cycles.

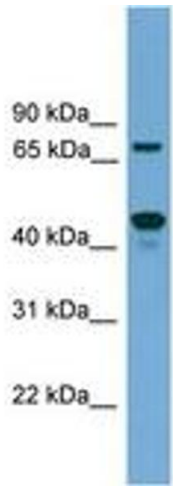


Image 1.