

Datasheet for ABIN6744643  
**anti-TMEM130 antibody (AA 201-250)**



[Go to Product page](#)

1 Image

Overview

|                      |  |
|----------------------|--|
| Quantity:            | 100 µL                                 |
| Target:              | TMEM130                                |
| Binding Specificity: | AA 201-250                             |
| Reactivity:          | Mouse, Pig                             |
| Host:                | Rabbit                                 |
| Clonality:           | Polyclonal                             |
| Conjugate:           | This TMEM130 antibody is un-conjugated |
| Application:         | Western Blotting (WB)                  |

Product Details

|                       |   |
|-----------------------|---|
| Immunogen:            | Synthetic peptide located between aa201-250 of mouse Tmem130 (Q6NXM3, NP_808403).<br>Percent identity by BLAST analysis: Mouse (100%), Rat (92%).<br><br>Type of Immunogen: Synthetic peptide |
| Specificity:          | Mouse TMEM130   |
| Predicted Reactivity: | Percent identity by BLAST analysis: Rat (92%).  |
| Purification:         | Immunoaffinity purified   |

Target Details

|                   |  |
|-------------------|--|
| Target:           | TMEM130                                      |
| Alternative Name: | TMEM130 ( <a href="#">TMEM130 Products</a> ) |

## Target Details

---

|                 |   |
|-----------------|---|
| Background:     | Name/Gene ID: TMEM130<br><br>Synonyms: TMEM130, Transmembrane protein 130 |
| Gene ID:        | 222865  |
| NCBI Accession: | <a href="#">NP_808403</a>   |

## Application Details

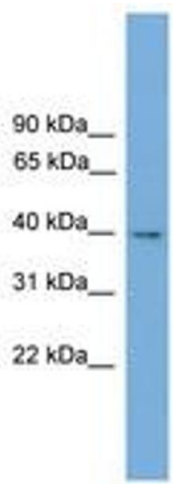
---

|                    |  |
|--------------------|--|
| Application Notes: | Approved: WB (0.2 - 1 µg/mL)<br><br>Usage: Western Blot: Suggested dilution at 1 µg/mL in 5 % skim milk / PBS buffer, and HRP conjugated anti-Rabbit IgG should be diluted in 1: 50,000 - 100,000 as secondary antibody. |
| Comment:           | Target Species of Antibody: Mouse  |
| Restrictions:      | For Research Use only  |

## Handling

---

|                  |   |
|------------------|---|
| Format:          | Lyophilized   |
| Reconstitution:  | Distilled water   |
| Concentration:   | Lot specific  |
| Buffer:          | Lyophilized from PBS with 2 % sucrose   |
| Handling Advice: | Avoid repeat freeze-thaw cycles.  |
| Storage:         | 4 °C,-20 °C   |
| Storage Comment: | Long term: -20°C, the use of 50% glycerol is recommended if storing aliquots in -20°C for long term use (up to 1 year)<br><br>Short term (less than 1 week): 4°C. Avoid freeze-thaw cycles. |



**Image 1.**