

Datasheet for ABIN6744646  
**anti-GLUT12 antibody (AA 551-600)**[Go to Product page](#)

## 1 Image

## Overview

Quantity:	100 µL
Target:	GLUT12 (SLC2A12)
Binding Specificity:	AA 551-600
Reactivity:	Mouse, Rabbit
Host:	Rabbit
Clonality:	Polyclonal
Conjugate:	This GLUT12 antibody is un-conjugated
Application:	Western Blotting (WB)

## Product Details

Immunogen:	Synthetic peptide located between aa551-600 of mouse Slc2a12 (Q8BFW9, NP_849265). Percent identity by BLAST analysis: Mouse, Rabbit (100%), Galago, Rat, Panda, Dog, Pig (92%), Human, Gorilla, Gibbon, Monkey, Marmoset, Bovine, Horse (85%), Elephant (84%).  Type of Immunogen: Synthetic peptide
Specificity:	Mouse SLC2A12 / GLUT12
Predicted Reactivity:	Percent identity by BLAST analysis: Mouse, Rabbit (100%) Rat, Dog, Pig (92%).
Purification:	Immunoaffinity purified

## Target Details

Target:	GLUT12 (SLC2A12)
---------	------------------

## Target Details

Alternative Name:	SLC2A12 / GLUT12 ( <a href="#">SLC2A12 Products</a> )
Background:	Name/Gene ID: SLC2A12 Subfamily: Sugar transporter Family: Transporter  Synonyms: SLC2A12, Glucose transporter 12, Glucose transporter type 12, GLUT-12, GLUT12, GLUT8
Gene ID:	154091
NCBI Accession:	<a href="#">NP_849265</a>
UniProt:	<a href="#">Q8TD20</a>
Pathways:	<a href="#">Warburg Effect</a>

## Application Details

Application Notes:	Approved: WB (0.2 - 1 µg/mL)  Usage: Western Blot: Suggested dilution at 1 µg/mL in 5 % skim milk / PBS buffer, and HRP conjugated anti-Rabbit IgG should be diluted in 1: 50,000 - 100,000 as secondary antibody.
Comment:	Target Species of Antibody: Mouse
Restrictions:	For Research Use only

## Handling

Format:	Lyophilized
Reconstitution:	Distilled water
Concentration:	Lot specific
Buffer:	Lyophilized from PBS with 2 % sucrose
Handling Advice:	Avoid repeat freeze-thaw cycles.
Storage:	4 °C, -20 °C
Storage Comment:	Long term: -20°C, the use of 50% glycerol is recommended if storing aliquots in -20°C for long term use (up to 1 year) Short term (less than 1 week): 4°C. Avoid freeze-thaw cycles.

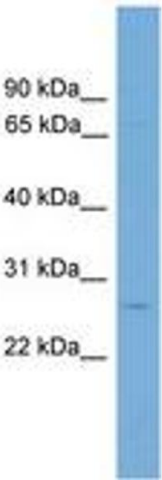


Image 1.