



[Go to Product page](#)

Datasheet for ABIN6744654
anti-DUXBL1 antibody (AA 221-270)

1 Image

Overview

Quantity:	100 µL
Target:	DUXBL1
Binding Specificity:	AA 221-270
Reactivity:	Mouse
Host:	Rabbit
Clonality:	Polyclonal
Conjugate:	This DUXBL1 antibody is un-conjugated
Application:	Western Blotting (WB)

Product Details

Immunogen:	Synthetic peptide located between aa221-270 of mouse Duxbl1 (Q7TNE6, NP_899245). Percent identity by BLAST analysis: Mouse (100%). Type of Immunogen: Synthetic peptide
Specificity:	Mouse DUXBL
Predicted Reactivity:	Percent identity by BLAST analysis: Mouse (100%).
Purification:	Immunoaffinity purified

Target Details

Target:	DUXBL1
Alternative Name:	Duxbl (DUXBL1 Products)

Target Details

Background: Name/Gene ID: Duxbl1

Synonyms: Duxbl1, Duxbl, Duxl, Double homeobox B-like 1, RGD1311053

Gene ID: 306226

NCBI Accession: [NP_899245](#)

Application Details

Application Notes: Approved: WB (0.2 - 1 µg/mL)

Usage: Western Blot: Suggested dilution at 1 µg/mL in 5 % skim milk / PBS buffer, and HRP conjugated anti-Rabbit IgG should be diluted in 1: 50,000 - 100,000 as secondary antibody.

Comment: Target Species of Antibody: Mouse

Restrictions: For Research Use only

Handling

Format: Lyophilized

Reconstitution: Distilled water

Concentration: Lot specific

Buffer: Lyophilized from PBS with 2 % sucrose

Handling Advice: Avoid repeat freeze-thaw cycles.

Storage: 4 °C, -20 °C

Storage Comment: Long term: -20°C, the use of 50% glycerol is recommended if storing aliquots in -20°C for long term use (up to 1 year)

Short term (less than 1 week): 4°C. Avoid freeze-thaw cycles.

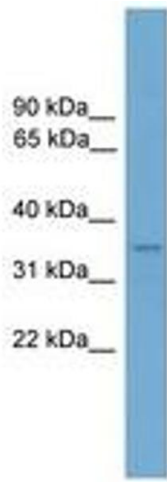


Image 1.