

Datasheet for ABIN6744656
anti-MAFA antibody (AA 81-130)[Go to Product page](#)

1 Image

Overview

Quantity:	100 µL
Target:	MAFA
Binding Specificity:	AA 81-130
Reactivity:	Mouse, Rat
Host:	Rabbit
Clonality:	Polyclonal
Conjugate:	This MAFA antibody is un-conjugated
Application:	Western Blotting (WB)

Product Details

Immunogen:	Synthetic peptide located between aa81-130 of mouse Mafa (Q8CF90, NP_919331). Percent identity by BLAST analysis: Mouse, Rat (100%). Type of Immunogen: Synthetic peptide
Specificity:	Mouse MAFA
Predicted Reactivity:	Percent identity by BLAST analysis: Mouse, Rat (100%).
Purification:	Immunoaffinity purified

Target Details

Target:	MAFA
Alternative Name:	MAFA (MAFA Products)

Target Details

Background:	Name/Gene ID: MAFA
	Synonyms: MAFA, HMafA, RIPE3b1, Transcription factor MafA, Transcription factor RIPE3b1
Gene ID:	389692
NCBI Accession:	NP_919331
UniProt:	Q8NHW3
Pathways:	Hormone Transport

Application Details

Application Notes:	Approved: WB (0.2 - 1 µg/mL)
	Usage: Western Blot: Suggested dilution at 1 µg/mL in 5 % skim milk / PBS buffer, and HRP conjugated anti-Rabbit IgG should be diluted in 1: 50,000 - 100,000 as secondary antibody.
Comment:	Target Species of Antibody: Mouse
Restrictions:	For Research Use only

Handling

Format:	Lyophilized
Reconstitution:	Distilled water
Concentration:	Lot specific
Buffer:	Lyophilized from PBS with 2 % sucrose
Handling Advice:	Avoid repeat freeze-thaw cycles.
Storage:	4 °C,-20 °C
Storage Comment:	Long term: -20°C, the use of 50% glycerol is recommended if storing aliquots in -20°C for long term use (up to 1 year) Short term (less than 1 week): 4°C. Avoid freeze-thaw cycles.

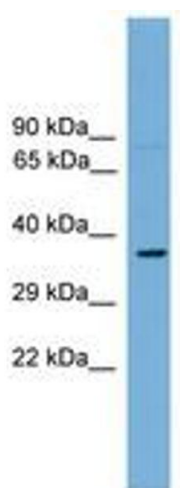


Image 1.