



Datasheet for ABIN6744665
anti-DRGX antibody (AA 151-200)



[Go to Product page](#)

1 Image

Overview

Quantity:	100 µL
Target:	DRGX
Binding Specificity:	AA 151-200
Reactivity:	Human, Mouse, Rat, Cow, Dog, Horse, Rabbit, Guinea Pig, Pig, Monkey, Chicken
Host:	Rabbit
Clonality:	Polyclonal
Conjugate:	This DRGX antibody is un-conjugated
Application:	Western Blotting (WB)

Product Details

Immunogen:	Synthetic peptide located between aa151-200 of mouse Prrxl1 (Q8BYH0, NP_001001796). Percent identity by BLAST analysis: Human, Gorilla, Gibbon, Galago, Marmoset, Mouse, Rat, Elephant, Dog, Bovine, Rabbit, Horse, Pig, Opossum, Guinea pig, Turkey, Zebra finch, Chicken, Platypus (100%), Xenopus (92%), Stickleback, Zebrafish (85%). Type of Immunogen: Synthetic peptide
Specificity:	Mouse DRGX
Predicted Reactivity:	Percent identity by BLAST analysis: Mouse, Rat (100%).
Purification:	Immunoaffinity purified

Target Details

Target:	DRGX
Alternative Name:	DRGX (DRGX Products)
Background:	Name/Gene ID: DRGX Synonyms: DRGX, Dorsal root ganglia homeobox, DRG11, Paired related homeobox-like 1, PRRXL1
Gene ID:	644168
NCBI Accession:	NP_001001796
UniProt:	A6NNA5

Application Details

Application Notes:	Approved: WB (0.2 - 1 µg/mL) Usage: Western Blot: Suggested dilution at 0.25 µg/mL in 5 % skim milk / PBS buffer, and HRP conjugated anti-Rabbit IgG should be diluted in 1: 50,000 - 100,000 as secondary antibody.
Comment:	Target Species of Antibody: Mouse
Restrictions:	For Research Use only

Handling

Format:	Lyophilized
Reconstitution:	Distilled water
Concentration:	Lot specific
Buffer:	Lyophilized from PBS with 2 % sucrose
Handling Advice:	Avoid repeat freeze-thaw cycles.
Storage:	4 °C, -20 °C
Storage Comment:	Long term: -20°C, the use of 50% glycerol is recommended if storing aliquots in -20°C for long term use (up to 1 year) Short term (less than 1 week): 4°C. Avoid freeze-thaw cycles.

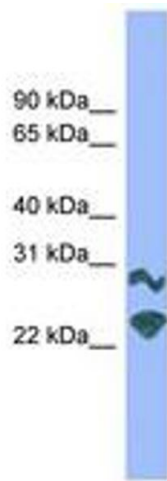


Image 1.