



Datasheet for ABIN6744670
anti-PIAS2 antibody (AA 81-130)



[Go to Product page](#)

1 Image

Overview

Quantity:	100 µL
Target:	PIAS2
Binding Specificity:	AA 81-130
Reactivity:	Mouse, Dog, Cow, Rabbit, Guinea Pig
Host:	Rabbit
Clonality:	Polyclonal
Conjugate:	This PIAS2 antibody is un-conjugated
Application:	Western Blotting (WB)

Product Details

Immunogen:	Synthetic peptide located between aa81-130 of mouse Pias2 (Q8C5D8, NP_032628). Percent identity by BLAST analysis: Mouse (100%), Human, Gorilla, Gibbon, Monkey, Galago, Marmoset, Rat, Horse, Opossum, Platypus (92%), Elephant, Dog, Bovine, Guinea pig, Zebra finch, Chicken (85%). Type of Immunogen: Synthetic peptide
Specificity:	Mouse PIAS2
Predicted Reactivity:	Percent identity by BLAST analysis: Mouse (100%) Human, Rat, Horse (92%) Dog, Bovine, Guinea pig, Chicken (85%).
Purification:	Immunoaffinity purified

Target Details

Target:	PIAS2
Alternative Name:	PIAS2 / PIASX (PIAS2 Products)
Background:	Name/Gene ID: PIAS2 Synonyms: PIAS2, ARIP3, DAB2-interacting protein, DIP, MIZ, MIZ1, PIAS-NY protein, PIASX, PIASX-ALPHA, PIASX-BETA, SIZ2, ZMIZ4, E3 SUMO-protein ligase PIAS2
Gene ID:	9063
NCBI Accession:	NP_032628
UniProt:	O75928
Pathways:	JAK-STAT Signaling , Intracellular Steroid Hormone Receptor Signaling Pathway , Regulation of Intracellular Steroid Hormone Receptor Signaling

Application Details

Application Notes:	Approved: WB (0.2 - 1 µg/mL) Usage: Western Blot: Suggested dilution at 1 µg/mL in 5 % skim milk / PBS buffer, and HRP conjugated anti-Rabbit IgG should be diluted in 1: 50,000 - 100,000 as secondary antibody.
Comment:	Target Species of Antibody: Mouse
Restrictions:	For Research Use only

Handling

Format:	Lyophilized
Reconstitution:	Distilled water
Concentration:	Lot specific
Buffer:	Lyophilized from PBS with 2 % sucrose
Handling Advice:	Avoid repeat freeze-thaw cycles.
Storage:	4 °C, -20 °C
Storage Comment:	Long term: -20°C, the use of 50% glycerol is recommended if storing aliquots in -20°C for long term use (up to 1 year) Short term (less than 1 week): 4°C. Avoid freeze-thaw cycles.

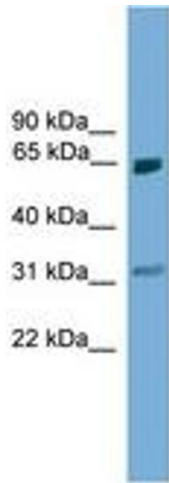


Image 1.