



[Go to Product page](#)

Datasheet for ABIN6744671
anti-PRRX2 antibody (AA 151-200)

1 Image

Overview

Quantity:	100 µL
Target:	PRRX2
Binding Specificity:	AA 151-200
Reactivity:	Mouse, Rat, Guinea Pig, Rabbit
Host:	Rabbit
Clonality:	Polyclonal
Conjugate:	This PRRX2 antibody is un-conjugated
Application:	Western Blotting (WB)

Product Details

Immunogen:	Synthetic peptide located between aa151-200 of mouse Prrx2 (Q06348, NP_033142). Percent identity by BLAST analysis: Mouse, Rat (100%), Human, Chimpanzee, Gorilla, Gibbon, Monkey, Galago, Marmoset, Elephant, Dog, Bovine, Bat, Pig (92%), Rabbit, Horse, Opossum, Turkey, Zebra finch, Chicken (85%). Type of Immunogen: Synthetic peptide
Specificity:	Mouse PRRX2
Predicted Reactivity:	Percent identity by BLAST analysis: Mouse, Rat (100%) Human, Dog, Bovine, Pig (92%) Rabbit, Chicken (85%).
Purification:	Immunoaffinity purified

Target Details

Target: PRRX2

Alternative Name: PRRX2 / PRX2 ([PRRX2 Products](#))

Background: Name/Gene ID: PRRX2

Synonyms: PRRX2, Paired related homeobox 2, PMX2, PRX-2, PRX2

Gene ID: 51450

NCBI Accession: [NP_033142](#)

UniProt: [Q99811](#)

Application Details

Application Notes: Approved: WB (0.2 - 1 µg/mL)

Usage: Western Blot: Suggested dilution at 1 µg/mL in 5 % skim milk / PBS buffer, and HRP conjugated anti-Rabbit IgG should be diluted in 1: 50,000 - 100,000 as secondary antibody.

Comment: Target Species of Antibody: Mouse

Restrictions: For Research Use only

Handling

Format: Lyophilized

Reconstitution: Distilled water

Concentration: Lot specific

Buffer: Lyophilized from PBS with 2 % sucrose

Handling Advice: Avoid repeat freeze-thaw cycles.

Storage: 4 °C, -20 °C

Storage Comment: Long term: -20°C, the use of 50% glycerol is recommended if storing aliquots in -20°C for long term use (up to 1 year)

Short term (less than 1 week): 4°C. Avoid freeze-thaw cycles.

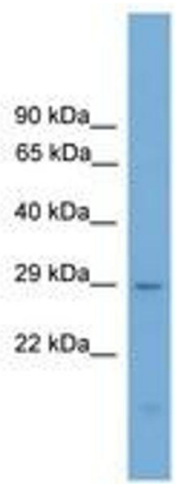


Image 1.