

Datasheet for ABIN6744692

**anti-RAD51AP1 antibody (AA 143-192)**[Go to Product page](#)**1** Image

## Overview

Quantity:	100 µL
Target:	RAD51AP1
Binding Specificity:	AA 143-192
Reactivity:	Human, Horse, Rabbit, Monkey
Host:	Rabbit
Clonality:	Polyclonal
Conjugate:	This RAD51AP1 antibody is un-conjugated
Application:	Western Blotting (WB)

## Product Details

Immunogen:	Synthetic peptide located between aa143-192 of human RAD51AP1 (A8K7D3, NP_006470). Percent identity by BLAST analysis: Human, Gorilla, Gibbon, Monkey, Galago (100%), Dog, Bat (92%), Horse (85%), Panda (84%).  Type of Immunogen: Synthetic peptide
Specificity:	Human RAD51AP1
Predicted Reactivity:	Percent identity by BLAST analysis: Human (100%) Dog (92%) Horse (85%).
Purification:	Immunoaffinity purified

## Target Details

Target:	RAD51AP1
---------	----------

## Target Details

Alternative Name:	RAD51AP1 ( <a href="#">RAD51AP1 Products</a> )
Background:	Name/Gene ID: RAD51AP1  Synonyms: RAD51AP1, PIR51, RAD51-associated protein 1, RAD51 associated protein 1, RAD51-interacting protein
Gene ID:	10635
NCBI Accession:	<a href="#">NP_006470</a>
UniProt:	<a href="#">Q96B01</a>

## Application Details

Application Notes:	Approved: WB (0.2 - 1 µg/mL)  Usage: Western Blot: Suggested dilution at 1 µg/mL in 5 % skim milk / PBS buffer, and HRP conjugated anti-Rabbit IgG should be diluted in 1: 50,000 - 100,000 as secondary antibody.
Comment:	Target Species of Antibody: Human
Restrictions:	For Research Use only

## Handling

Format:	Lyophilized
Reconstitution:	Distilled water
Concentration:	Lot specific
Buffer:	Lyophilized from PBS with 2 % sucrose
Handling Advice:	Avoid repeat freeze-thaw cycles.
Storage:	4 °C, -20 °C
Storage Comment:	Long term: -20°C, the use of 50% glycerol is recommended if storing aliquots in -20°C for long term use (up to 1 year)  Short term (less than 1 week): 4°C. Avoid freeze-thaw cycles.

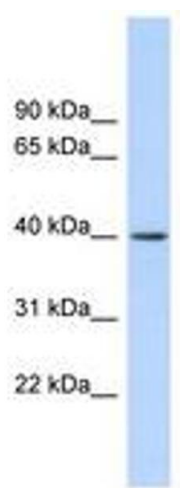


Image 1.