



[Go to Product page](#)

Datasheet for ABIN6744698
anti-HSD17B11 antibody (AA 35-84)

1 Image

Overview

Quantity:	100 µL
Target:	HSD17B11
Binding Specificity:	AA 35-84
Reactivity:	Human, Cow, Dog, Bat, Monkey
Host:	Rabbit
Clonality:	Polyclonal
Conjugate:	This HSD17B11 antibody is un-conjugated
Application:	Western Blotting (WB)

Product Details

Immunogen:	Synthetic peptide located between aa35-84 of human HSD17B11 (Q8NBQ5, NP_057329). Percent identity by BLAST analysis: Human, Chimpanzee, Gorilla, Orangutan, Gibbon, Monkey, Galago, Marmoset, Elephant, Dog, Bat, Opossum (100%), Mouse, Rat, Rabbit, Horse, Guinea pig, Platypus (92%), Bovine (85%). Type of Immunogen: Synthetic peptide
Specificity:	Human HSD17B11
Predicted Reactivity:	Percent identity by BLAST analysis: Human, Dog (100%) Mouse, Bovine (85%).
Purification:	Immunoaffinity purified

Target Details

Target:	HSD17B11
Alternative Name:	HSD17B11 (HSD17B11 Products)
Background:	Name/Gene ID: HSD17B11 Synonyms: HSD17B11, 17-beta-HSD 11, 17-BETA-HSDXI, 17betaHSD11, 17-beta-HSD XI, 17-BETA-HSD11, 17betaHSDXI, 17BHSD11, CTCL tumor antigen HD-CL-03, DHRS8, RetSDR2, SDR16C2, PAN1B
Gene ID:	51170
NCBI Accession:	NP_057329
UniProt:	Q8NBQ5

Application Details

Application Notes:	Approved: WB (0.2 - 1 µg/mL) Usage: Western Blot: Suggested dilution at 1 µg/mL in 5 % skim milk / PBS buffer, and HRP conjugated anti-Rabbit IgG should be diluted in 1: 50,000 - 100,000 as secondary antibody.
Comment:	Target Species of Antibody: Human
Restrictions:	For Research Use only

Handling

Format:	Lyophilized
Reconstitution:	Distilled water
Concentration:	Lot specific
Buffer:	Lyophilized from PBS with 2 % sucrose
Handling Advice:	Avoid repeat freeze-thaw cycles.
Storage:	4 °C,-20 °C
Storage Comment:	Long term: -20°C, the use of 50% glycerol is recommended if storing aliquots in -20°C for long term use (up to 1 year) Short term (less than 1 week): 4°C. Avoid freeze-thaw cycles.

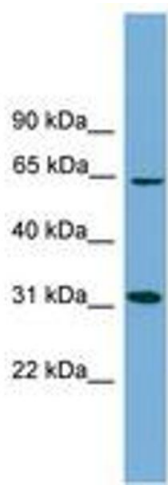


Image 1.