

Datasheet for ABIN6744711
anti-CRABP2 antibody (AA 35-84)[Go to Product page](#)

1 Image

Overview

Quantity:	100 µL
Target:	CRABP2
Binding Specificity:	AA 35-84
Reactivity:	Human, Guinea Pig, Dog, Cow, Horse, Monkey, Bat
Host:	Rabbit
Clonality:	Polyclonal
Conjugate:	This CRABP2 antibody is un-conjugated
Application:	Western Blotting (WB)

Product Details

Immunogen:	Synthetic peptide located between aa35-84 of human CRABP2 (P29373, NP_001869). Percent identity by BLAST analysis: Human, Chimpanzee, Gorilla, Gibbon, Monkey, Galago, Marmoset, Elephant, Panda, Dog, Bovine, Bat, Horse, Guinea pig (100%), Mouse, Pig, Xenopus (92%), Rat (86%), Hamster, Rabbit (85%), Chicken, Stickleback (84%). Type of Immunogen: Synthetic peptide
Specificity:	Human CRABP2
Predicted Reactivity:	Percent identity by BLAST analysis: Human, Dog, Bovine (100%) Pig (92%).
Purification:	Immunoaffinity purified

Target Details

Target:	CRABP2
Alternative Name:	CRABP2 (CRABP2 Products)
Background:	Name/Gene ID: CRABP2 Synonyms: CRABP2, CRABP-II, RBP6
Gene ID:	1382
NCBI Accession:	NP_001869
UniProt:	P29373

Application Details

Application Notes:	Approved: WB (0.2 - 1 µg/mL) Usage: Western Blot: Suggested dilution at 1 µg/mL in 5 % skim milk / PBS buffer, and HRP conjugated anti-Rabbit IgG should be diluted in 1: 50,000 - 100,000 as secondary antibody.
Comment:	Target Species of Antibody: Human
Restrictions:	For Research Use only

Handling

Format:	Lyophilized
Reconstitution:	Distilled water
Concentration:	Lot specific
Buffer:	Lyophilized from PBS with 2 % sucrose
Handling Advice:	Avoid repeat freeze-thaw cycles.
Storage:	4 °C, -20 °C
Storage Comment:	Long term: -20°C, the use of 50% glycerol is recommended if storing aliquots in -20°C for long term use (up to 1 year) Short term (less than 1 week): 4°C. Avoid freeze-thaw cycles.

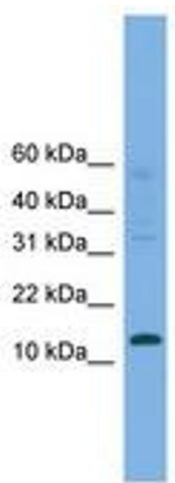


Image 1.