



Datasheet for ABIN6744715
anti-SOCS1 antibody (AA 107-156)



[Go to Product page](#)

1 Image

Overview

Quantity:	100 µL
Target:	SOCS1
Binding Specificity:	AA 107-156
Reactivity:	Human, Mouse, Rat, Cow, Pig, Dog, Rabbit, Horse, Guinea Pig, Bat, Monkey
Host:	Rabbit
Clonality:	Polyclonal
Conjugate:	This SOCS1 antibody is un-conjugated
Application:	Western Blotting (WB)

Product Details

Immunogen:	Synthetic peptide located between aa107-156 of human SOCS1 (O15524, NP_003736). Percent identity by BLAST analysis: Human, Chimpanzee, Gorilla, Gibbon, Monkey, Galago, Marmoset, Mouse, Rat, Elephant, Dog, Bovine, Bat, Rabbit, Horse, Pig, Guinea pig (100%), Opossum (92%). Type of Immunogen: Synthetic peptide
Specificity:	Human SOCS1
Predicted Reactivity:	Percent identity by BLAST analysis: Human, Mouse, Rat, Dog, Bovine, Rabbit, Horse, Pig (100%).
Purification:	Immunoaffinity purified

Target Details

Target:	SOCS1
---------	-------

Target Details

Alternative Name:	SOCS1 (SOCS1 Products)
Background:	Name/Gene ID: SOCS1 Synonyms: SOCS1, CIS1, CISH1, JAB, JAK-binding protein, JAK binding protein, STAT-induced STAT inhibitor 1, SSI-1, Tec-interacting protein 3, TIP3, SOCS-1, SSI1, STAT induced SH3 protein 1, TIP-3
Gene ID:	8651
NCBI Accession:	NP_003736
UniProt:	O15524
Pathways:	JAK-STAT Signaling , Interferon-gamma Pathway , TLR Signaling , Response to Growth Hormone Stimulus

Application Details

Application Notes:	Approved: WB (0.2 - 1 µg/mL) Usage: Western Blot: Suggested dilution at 1 µg/mL in 5 % skim milk / PBS buffer, and HRP conjugated anti-Rabbit IgG should be diluted in 1: 50,000 - 100,000 as secondary antibody.
Comment:	Target Species of Antibody: Human
Restrictions:	For Research Use only

Handling

Format:	Lyophilized
Reconstitution:	Distilled water
Concentration:	Lot specific
Buffer:	Lyophilized from PBS with 2 % sucrose
Handling Advice:	Avoid repeat freeze-thaw cycles.
Storage:	4 °C, -20 °C
Storage Comment:	Long term: -20°C, the use of 50% glycerol is recommended if storing aliquots in -20°C for long term use (up to 1 year) Short term (less than 1 week): 4°C. Avoid freeze-thaw cycles.

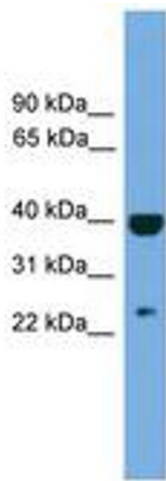


Image 1.