



Datasheet for ABIN6744721 **anti-ACP1 antibody (AA 35-84)**



[Go to Product page](#)

1 Image

Overview

Quantity:	100 µL
Target:	ACP1
Binding Specificity:	AA 35-84
Reactivity:	Human, Rat, Goat, Guinea Pig, Monkey
Host:	Rabbit
Clonality:	Polyclonal
Conjugate:	This ACP1 antibody is un-conjugated
Application:	Western Blotting (WB)

Product Details

Immunogen:	Synthetic peptide located between aa35-84 of human ACP1 (P24666, NP_009030). Percent identity by BLAST analysis: Human, Chimpanzee, Gorilla, Gibbon, Monkey, Galago, Marmoset (100%), Mouse, Pig, Opossum, Zebra finch (92%), Rat, Goat, Hamster, Panda, Bovine, Guinea pig (85%). Type of Immunogen: Synthetic peptide
Specificity:	Human ACP1 / Acid Phosphatase
Predicted Reactivity:	Percent identity by BLAST analysis: Mouse (92%) Rat, Goat, Guinea pig (85%) Human (84%).
Purification:	Immunoaffinity purified

Target Details

Target:	ACP1
Alternative Name:	ACP1 / Acid Phosphatase (ACP1 Products)
Background:	Name/Gene ID: ACP1 Synonyms: ACP1, Acid Phosphatase, Acid phosphatase 1, soluble, Acid phosphatase 1 soluble, Adipocyte acid phosphatase, LMW-PTP, HAAP, Red cell acid phosphatase 1, LMW-PTPase, Protein tyrosine phosphatase
Gene ID:	52
NCBI Accession:	NP_009030
UniProt:	P24666

Application Details

Application Notes:	Approved: WB (0.2 - 1 µg/mL) Usage: Western Blot: Suggested dilution at 0.25 µg/mL in 5 % skim milk / PBS buffer, and HRP conjugated anti-Rabbit IgG should be diluted in 1: 50,000 - 100,000 as secondary antibody.
Comment:	Target Species of Antibody: Human
Restrictions:	For Research Use only

Handling

Format:	Lyophilized
Reconstitution:	Distilled water
Concentration:	Lot specific
Buffer:	Lyophilized from PBS with 2 % sucrose
Handling Advice:	Avoid repeat freeze-thaw cycles.
Storage:	4 °C,-20 °C
Storage Comment:	Long term: -20°C, the use of 50% glycerol is recommended if storing aliquots in -20°C for long term use (up to 1 year) Short term (less than 1 week): 4°C. Avoid freeze-thaw cycles.

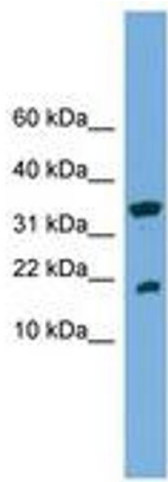


Image 1.