



[Go to Product page](#)

Datasheet for ABIN6744722
anti-TPPP3 antibody (N-Term)

1 Image

Overview

Quantity:	100 µL
Target:	TPPP3
Binding Specificity:	N-Term
Reactivity:	Human, Mouse, Rat, Cow, Horse, Pig, Bat, Hamster
Host:	Rabbit
Clonality:	Polyclonal
Conjugate:	This TPPP3 antibody is un-conjugated
Application:	Western Blotting (WB)

Product Details

Immunogen:	Synthetic peptide from N-Terminus of human TPPP3 (Q5PPN5, NP_057224). Percent identity by BLAST analysis: Human, Gorilla, Gibbon, Monkey, Galago, Mouse, Rat, Hamster, Elephant, Panda, Bovine, Bat, Horse, Pig (100%), Marmoset, Opossum, Guinea pig (92%), Turkey, Chicken, Lizard, Stickleback (91%), Zebra finch, Xenopus (85%), Platypus, Salmon, Smelt (83%). Type of Immunogen: Synthetic peptide
Specificity:	Human TPPP3
Predicted Reactivity:	Percent identity by BLAST analysis: Human, Mouse, Rat, Bovine, Horse, Pig (100%) Chicken (85%).
Purification:	Immunoaffinity purified

Target Details

Target:	TPPP3
Alternative Name:	TPPP3 (TPPP3 Products)
Background:	Name/Gene ID: TPPP3 Synonyms: TPPP3, Brain specific protein, CGI-38, p25gamma, TPPP/p20, p20
Gene ID:	51673
NCBI Accession:	NP_057224
UniProt:	Q9BW30

Application Details

Application Notes:	Approved: WB (0.2 - 1 µg/mL) Usage: Western Blot: Suggested dilution at 1 µg/mL in 5 % skim milk / PBS buffer, and HRP conjugated anti-Rabbit IgG should be diluted in 1: 50,000 - 100,000 as secondary antibody.
Comment:	Target Species of Antibody: Human
Restrictions:	For Research Use only

Handling

Format:	Lyophilized
Reconstitution:	Distilled water
Concentration:	Lot specific
Buffer:	Lyophilized from PBS with 2 % sucrose
Handling Advice:	Avoid repeat freeze-thaw cycles.
Storage:	4 °C, -20 °C
Storage Comment:	Long term: -20°C, the use of 50% glycerol is recommended if storing aliquots in -20°C for long term use (up to 1 year) Short term (less than 1 week): 4°C. Avoid freeze-thaw cycles.

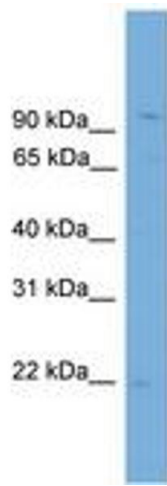


Image 1.