

Datasheet for ABIN6744724
anti-TBC1D16 antibody (AA 71-120)[Go to Product page](#)

1 Image

Overview

Quantity:	100 µL
Target:	TBC1D16
Binding Specificity:	AA 71-120
Reactivity:	Human, Mouse, Zebrafish (Danio rerio), Dog, Guinea Pig, Hamster, Monkey, Xenopus laevis
Host:	Rabbit
Clonality:	Polyclonal
Conjugate:	This TBC1D16 antibody is un-conjugated
Application:	Western Blotting (WB)

Product Details

Immunogen:	Synthetic peptide located between aa71-120 of human TBC1D16 (Q8TBP0, NP_061893). Percent identity by BLAST analysis: Human, Chimpanzee, Gorilla, Gibbon, Monkey, Galago, Marmoset, Mouse, Hamster, Panda, Dog, Opossum, Guinea pig, Lizard, Xenopus, Zebrafish (100%), Bovine, Pig, Turkey, Zebra finch, Chicken, Platypus (92%), Stickleback (85%). Type of Immunogen: Synthetic peptide
Specificity:	Human TBC1D16
Predicted Reactivity:	Percent identity by BLAST analysis: Human, Mouse, Dog, Xenopus, Zebrafish (100%) Bovine, Pig, Chicken (92%).
Purification:	Immunoaffinity purified

Target Details

Target:	TBC1D16
Alternative Name:	TBC1D16 (TBC1D16 Products)
Background:	Name/Gene ID: TBC1D16 Synonyms: TBC1D16, TBC1 domain family, member 16, TBC1 domain family member 16
Gene ID:	125058
NCBI Accession:	NP_061893
UniProt:	Q8TBP0

Application Details

Application Notes:	Approved: WB (0.2 - 1 µg/mL) Usage: Western Blot: Suggested dilution at 1 µg/mL in 5 % skim milk / PBS buffer, and HRP conjugated anti-Rabbit IgG should be diluted in 1: 50,000 - 100,000 as secondary antibody.
Comment:	Target Species of Antibody: Human
Restrictions:	For Research Use only

Handling

Format:	Lyophilized
Reconstitution:	Distilled water
Concentration:	Lot specific
Buffer:	Lyophilized from PBS with 2 % sucrose
Handling Advice:	Avoid repeat freeze-thaw cycles.
Storage:	4 °C, -20 °C
Storage Comment:	Long term: -20°C, the use of 50% glycerol is recommended if storing aliquots in -20°C for long term use (up to 1 year) Short term (less than 1 week): 4°C. Avoid freeze-thaw cycles.

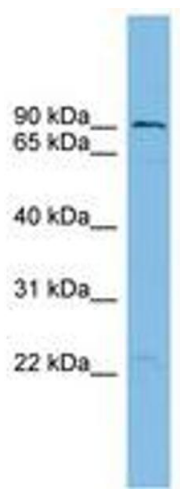


Image 1.