



[Go to Product page](#)

Datasheet for ABIN6744748
anti-ABCG5 antibody (AA 287-336)

1 Image

Overview

Quantity:	100 µL
Target:	ABCG5
Binding Specificity:	AA 287-336
Reactivity:	Human, Mouse, Rat, Cow, Dog, Rabbit
Host:	Rabbit
Clonality:	Polyclonal
Conjugate:	This ABCG5 antibody is un-conjugated
Application:	Western Blotting (WB)

Product Details

Immunogen:	Synthetic peptide located between aa287-336 of human ABCG5 (Q9H222, NP_071881). Percent identity by BLAST analysis: Human, Gorilla, Gibbon (100%), Monkey, Marmoset, Panda, Horse (92%), Elephant (90%), Galago, Mouse, Rat, Dog, Bovine, Bat, Rabbit (85%). Type of Immunogen: Synthetic peptide
Specificity:	Human ABCG5
Predicted Reactivity:	Percent identity by BLAST analysis: Human (100%) Horse (92%) Mouse, Rat, Dog, Bovine, Rabbit (85%).
Purification:	Immunoaffinity purified

Target Details

Target:	ABCG5
Alternative Name:	ABCG5 (ABCG5 Products)
Background:	Name/Gene ID: ABCG5 Subfamily: ATP-binding cassette - ABCG/WHITE Family: Transporter Synonyms: ABCG5, STSL, Sterolin, Sterolin 1, Sterolin-1
Gene ID:	64240
NCBI Accession:	NP_071881
UniProt:	Q9H222
Pathways:	Lipid Metabolism

Application Details

Application Notes:	Approved: WB (0.2 - 1 µg/mL) Usage: Western Blot: Suggested dilution at 1 µg/mL in 5 % skim milk / PBS buffer, and HRP conjugated anti-Rabbit IgG should be diluted in 1: 50,000 - 100,000 as secondary antibody.
Comment:	Target Species of Antibody: Human
Restrictions:	For Research Use only

Handling

Format:	Lyophilized
Reconstitution:	Distilled water
Concentration:	Lot specific
Buffer:	Lyophilized from PBS with 2 % sucrose
Handling Advice:	Avoid repeat freeze-thaw cycles.
Storage:	4 °C, -20 °C
Storage Comment:	Long term: -20°C, the use of 50% glycerol is recommended if storing aliquots in -20°C for long term use (up to 1 year) Short term (less than 1 week): 4°C. Avoid freeze-thaw cycles.

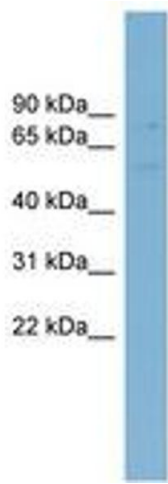


Image 1.