

Datasheet for ABIN6744751 anti-SLC25A4 antibody (AA 35-84)



[Go to Product page](#)

1 Image

Overview

Quantity:	100 µL
Target:	SLC25A4
Binding Specificity:	AA 35-84
Reactivity:	Human, Mouse, Rat, Guinea Pig, Rabbit, Cow, Sheep, Dog, Zebrafish (Danio rerio), Goat, Monkey, Pig
Host:	Rabbit
Clonality:	Polyclonal
Conjugate:	This SLC25A4 antibody is un-conjugated
Application:	Western Blotting (WB)

Product Details

Immunogen:	Synthetic peptide located between aa35-84 of human SLC25A4 (Q05962, NP_001142). Percent identity by BLAST analysis: Human, Chimpanzee, Gorilla, Gibbon, Monkey, Galago, Mouse, Rat, Sheep, Goat, Dog, Bovine, Rabbit, Pig, Guinea pig (100%), Elephant, Bat, Horse, Turkey, Zebra finch, Chicken (92%), Orangutan, Marmoset, Opossum, Lizard, Trout, Salmon, Pufferfish, Zebrafish, Beetle (85%), Xenopus (84%). Type of Immunogen: Synthetic peptide
Specificity:	Human SLC25A4
Predicted Reactivity:	Percent identity by BLAST analysis: Human, Mouse, Rat, Sheep, Dog, Bovine, Goat (100%) Chicken (92%) Xenopus (84%).

Product Details

Purification: Immunoaffinity purified

Target Details

Target: SLC25A4

Alternative Name: SLC25A4 / ANT ([SLC25A4 Products](#))

Background: Name/Gene ID: SLC25A4
Subfamily: Mitochondrial carrier
Family: Transporter

Synonyms: SLC25A4, AAC1, ANT, ANT 1, ADP/ATP translocase 1, ANT1, ADP,ATP carrier protein 1, PEO2, T1, PEO3

Gene ID: 291

NCBI Accession: [NP_001142](#)

UniProt: [P12235](#)

Pathways: [Proton Transport](#), [Dicarboxylic Acid Transport](#)

Application Details

Application Notes: Approved: WB (0.2 - 1 µg/mL)

Usage: Western Blot: Suggested dilution at 1 µg/mL in 5 % skim milk / PBS buffer, and HRP conjugated anti-Rabbit IgG should be diluted in 1: 50,000 - 100,000 as secondary antibody.

Comment: Target Species of Antibody: Human

Restrictions: For Research Use only

Handling

Format: Lyophilized

Reconstitution: Distilled water

Concentration: Lot specific

Buffer: Lyophilized from PBS with 2 % sucrose

Handling Advice: Avoid repeat freeze-thaw cycles.

Handling

Storage:	4 °C,-20 °C
Storage Comment:	Long term: -20°C, the use of 50% glycerol is recommended if storing aliquots in -20°C for long term use (up to 1 year) Short term (less than 1 week): 4°C. Avoid freeze-thaw cycles.

Images

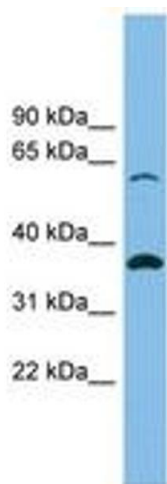


Image 1.