

Datasheet for ABIN6744753
anti-SLC7A1 antibody (AA 107-156)



[Go to Product page](#)

1 Image

Overview

Quantity:	100 µL
Target:	SLC7A1
Binding Specificity:	AA 107-156
Reactivity:	Human, Horse, Rabbit, Monkey, Pig, Dog
Host:	Rabbit
Clonality:	Polyclonal
Conjugate:	This SLC7A1 antibody is un-conjugated
Application:	Western Blotting (WB)

Product Details

Immunogen:	Synthetic peptide located between aa107-156 of human SLC7A1 (P30825, NP_003036). Percent identity by BLAST analysis: Human, Chimpanzee, Orangutan, Gibbon, Monkey, Galago, Marmoset, Elephant, Horse (100%), Mouse, Rat, Hamster, Bovine, Bat, Guinea pig (92%), Dog, Opossum (85%), Panda, Pig (84%). Type of Immunogen: Synthetic peptide
Specificity:	Human SLC7A1
Predicted Reactivity:	Percent identity by BLAST analysis: Horse (100%) Mouse, Rat, Bovine (92%) Dog (85%) Pig (84%).
Purification:	Immunoaffinity purified

Target Details

Target:	SLC7A1
Alternative Name:	SLC7A1 / ERR (SLC7A1 Products)
Background:	Name/Gene ID: SLC7A1 Subfamily: Cationic amino acid transporter Family: Transporter Synonyms: SLC7A1, ATRC1, Atrc-1, CAT1, CAT-1, ERR, HCAT1, Rec-1, REC1L, Ecotropic retroviral receptor
Gene ID:	6541
NCBI Accession:	NP_003036
UniProt:	P30825
Pathways:	Dicarboxylic Acid Transport

Application Details

Application Notes:	Approved: WB (0.2 - 1 µg/mL) Usage: Western Blot: Suggested dilution at 1 µg/mL in 5 % skim milk / PBS buffer, and HRP conjugated anti-Rabbit IgG should be diluted in 1: 50,000 - 100,000 as secondary antibody.
Comment:	Target Species of Antibody: Human
Restrictions:	For Research Use only

Handling

Format:	Lyophilized
Reconstitution:	Distilled water
Concentration:	Lot specific
Buffer:	Lyophilized from PBS with 2 % sucrose
Handling Advice:	Avoid repeat freeze-thaw cycles.
Storage:	4 °C,-20 °C
Storage Comment:	Long term: -20°C, the use of 50% glycerol is recommended if storing aliquots in -20°C for long term use (up to 1 year)

Handling

Short term (less than 1 week): 4°C. Avoid freeze-thaw cycles.

Images

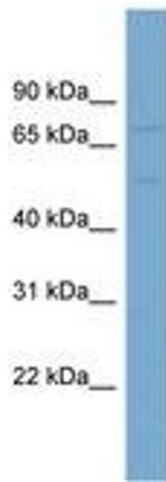


Image 1.