



Datasheet for ABIN6744760  
**anti-SLC25A19 antibody (AA 107-156)**



[Go to Product page](#)

1 Image

Overview

Quantity:	100 µL
Target:	SLC25A19
Binding Specificity:	AA 107-156
Reactivity:	Human, Mouse, Rat, Rabbit, Monkey, Pig
Host:	Rabbit
Clonality:	Polyclonal
Conjugate:	This SLC25A19 antibody is un-conjugated
Application:	Western Blotting (WB)

Product Details

Immunogen:	Synthetic peptide located between aa107-156 of human SLC25A19 (Q9HC21, NP_068380). Percent identity by BLAST analysis: Human, Chimpanzee, Gorilla, Orangutan, Gibbon, Monkey, Galago, Marmoset, Mouse, Rat, Rabbit (100%), Sheep, Hamster, Elephant, Dog, Bovine, Bat, Horse, Guinea pig (92%), Panda (85%).  Type of Immunogen: Synthetic peptide
Specificity:	Human SLC25A19
Predicted Reactivity:	Percent identity by BLAST analysis: Human, Mouse, Rat (100%) Sheep, Dog (92%).
Purification:	Immunoaffinity purified

## Target Details

---

Target:	SLC25A19
Alternative Name:	SLC25A19 ( <a href="#">SLC25A19 Products</a> )
Background:	Name/Gene ID: SLC25A19 Subfamily: Mitochondrial carrier Family: Transporter  Synonyms: SLC25A19, DNC, THMD4, MCPHA, TPC, Microcephaly, Amish, THMD3
Gene ID:	60386
NCBI Accession:	<a href="#">NP_068380</a>
UniProt:	<a href="#">Q9HC21</a>

## Application Details

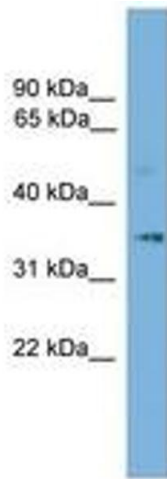
---

Application Notes:	Approved: WB (0.2 - 1 µg/mL)  Usage: Western Blot: Suggested dilution at 1 µg/mL in 5 % skim milk / PBS buffer, and HRP conjugated anti-Rabbit IgG should be diluted in 1: 50,000 - 100,000 as secondary antibody.
Comment:	Target Species of Antibody: Human
Restrictions:	For Research Use only

## Handling

---

Format:	Lyophilized
Reconstitution:	Distilled water
Concentration:	Lot specific
Buffer:	Lyophilized from PBS with 2 % sucrose
Handling Advice:	Avoid repeat freeze-thaw cycles.
Storage:	4 °C,-20 °C
Storage Comment:	Long term: -20°C, the use of 50% glycerol is recommended if storing aliquots in -20°C for long term use (up to 1 year) Short term (less than 1 week): 4°C. Avoid freeze-thaw cycles.



**Image 1.**