

Datasheet for ABIN6744767
anti-FUT1 antibody (AA 287-336)[Go to Product page](#)

1 Image

Overview

Quantity:	100 µL
Target:	FUT1
Binding Specificity:	AA 287-336
Reactivity:	Human, Mouse, Rat, Pig, Rabbit, Dog, Goat, Horse, Monkey, Bat
Host:	Rabbit
Clonality:	Polyclonal
Conjugate:	This FUT1 antibody is un-conjugated
Application:	Western Blotting (WB)

Product Details

Immunogen:	Synthetic peptide located between aa287-336 of human FUT1 (P19526, NP_000139). Percent identity by BLAST analysis: Human, Chimpanzee, Gorilla, Orangutan, Gibbon, Monkey, Galago, Marmoset, Mouse, Rat, Goat, Elephant, Panda, Dog, Bat, Rabbit, Horse (100%), Bovine, Guinea pig (92%), Pig, Platypus (84%), Opossum (83%). Type of Immunogen: Synthetic peptide
Specificity:	Human FUT1
Predicted Reactivity:	Percent identity by BLAST analysis: Human, Mouse, Rat, Dog, Goat, Rabbit, Horse (100%) Bovine (92%) Pig, Guinea pig (84%).
Purification:	Immunoaffinity purified

Target Details

Target:	FUT1
Alternative Name:	FUT1 / HSC (FUT1 Products)
Background:	Name/Gene ID: FUT1 Synonyms: FUT1, 2-alpha-L-fucosyltransferase, Alpha (1,2) fucosyltransferase, Alpha(1,2)FT 1, Fucosyltransferase 1, HH, HSC
Gene ID:	2523
NCBI Accession:	NP_000139
UniProt:	P19526

Application Details

Application Notes:	Approved: WB (0.2 - 1 µg/mL) Usage: Western Blot: Suggested dilution at 1 µg/mL in 5 % skim milk / PBS buffer, and HRP conjugated anti-Rabbit IgG should be diluted in 1: 50,000 - 100,000 as secondary antibody.
Comment:	Target Species of Antibody: Human
Restrictions:	For Research Use only

Handling

Format:	Lyophilized
Reconstitution:	Distilled water
Concentration:	Lot specific
Buffer:	Lyophilized from PBS with 2 % sucrose
Handling Advice:	Avoid repeat freeze-thaw cycles.
Storage:	4 °C, -20 °C
Storage Comment:	Long term: -20°C, the use of 50% glycerol is recommended if storing aliquots in -20°C for long term use (up to 1 year) Short term (less than 1 week): 4°C. Avoid freeze-thaw cycles.

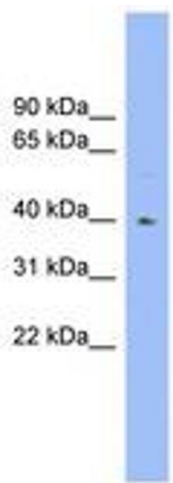


Image 1.