



Datasheet for ABIN6744775
anti-UMODL1 antibody (AA 1115-1164)



[Go to Product page](#)

1 Image

Overview

Quantity:	100 µL
Target:	UMODL1
Binding Specificity:	AA 1115-1164
Reactivity:	Human, Mouse, Horse
Host:	Rabbit
Clonality:	Polyclonal
Conjugate:	This UMODL1 antibody is un-conjugated
Application:	Western Blotting (WB)

Product Details

Immunogen:	Synthetic peptide located between aa1115-1164 of human UMODL1 (Q5DID0, NP_001004416). Percent identity by BLAST analysis: Human, Chimpanzee, Gorilla, Monkey (100%), Marmoset, Rat, Panda, Dog, Bovine, Bat (92%), Gibbon, Mouse, Horse (85%). Type of Immunogen: Synthetic peptide
Specificity:	Human UMODL1
Predicted Reactivity:	Percent identity by BLAST analysis: Human (100%) Rat, Dog, Bovine (92%) Mouse, Horse (85%).
Purification:	Immunoaffinity purified

Target Details

Target:	UMODL1
---------	--------

Target Details

Alternative Name:	UMODL1 (UMODL1 Products)
Background:	Name/Gene ID: UMODL1 Synonyms: UMODL1, Olfactorin, Uromodulin-like 1
Gene ID:	89766
NCBI Accession:	NP_001004416
UniProt:	Q5DID0

Application Details

Application Notes:	Approved: WB (0.2 - 1 µg/mL) Usage: Western Blot: Suggested dilution at 1 µg/mL in 5 % skim milk / PBS buffer, and HRP conjugated anti-Rabbit IgG should be diluted in 1: 50,000 - 100,000 as secondary antibody.
Comment:	Target Species of Antibody: Human
Restrictions:	For Research Use only

Handling

Format:	Lyophilized
Reconstitution:	Distilled water
Concentration:	Lot specific
Buffer:	Lyophilized from PBS with 2 % sucrose
Handling Advice:	Avoid repeat freeze-thaw cycles.
Storage:	4 °C,-20 °C
Storage Comment:	Long term: -20°C, the use of 50% glycerol is recommended if storing aliquots in -20°C for long term use (up to 1 year) Short term (less than 1 week): 4°C. Avoid freeze-thaw cycles.

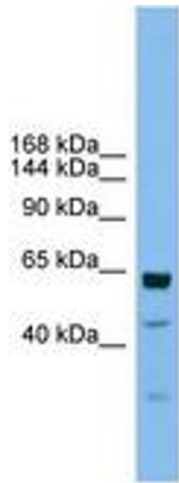


Image 1.