



[Go to Product page](#)

Datasheet for ABIN6744776
anti-B4GALT2 antibody (AA 251-300)

1 Image

Overview

Quantity:	100 µL
Target:	B4GALT2
Binding Specificity:	AA 251-300
Reactivity:	Human, Mouse, Rat, Cow, Horse, Rabbit, Dog, Guinea Pig, Zebrafish (Danio rerio), Monkey, Bat, Hamster, Chicken, Pig
Host:	Rabbit
Clonality:	Polyclonal
Conjugate:	This B4GALT2 antibody is un-conjugated
Application:	Western Blotting (WB)

Product Details

Immunogen:	Synthetic peptide located between aa251-300 of human B4GALT2 (O60909, NP_001005417). Percent identity by BLAST analysis: Human, Gorilla, Gibbon, Monkey, Galago, Marmoset, Mouse, Rat, Hamster, Elephant, Panda, Dog, Bovine, Bat, Rabbit, Horse, Pig, Opossum, Guinea pig, Turkey, Zebra finch, Chicken, Platypus, Lizard, Zebrafish (100%), Stickleback (91%), Sheep, Goat, Xenopus (90%). Type of Immunogen: Synthetic peptide
Specificity:	Human B4GALT2
Predicted Reactivity:	Percent identity by BLAST analysis: Human, Mouse, Rat, Dog, Bovine, Rabbit, Horse, Guinea pig, Chicken (100%) Xenopus (90%).

Product Details

Purification: Immunoaffinity purified

Target Details

Target: B4GALT2

Alternative Name: B4GALT2 ([B4GALT2 Products](#))

Background: Name/Gene ID: B4GALT2

Synonyms: B4GALT2, Beta-4-GalT2, Beta4Gal-T2, B4Gal-T2, B4Gal-T3, Beta-1,4-GalTase 2

Gene ID: 8704

NCBI Accession: [NP_001005417](#)

UniProt: [O60909](#)

Pathways: [Glycosaminoglycan Metabolic Process](#)

Application Details

Application Notes: Approved: WB (0.2 - 1 µg/mL)

Usage: Western Blot: Suggested dilution at 1 µg/mL in 5 % skim milk / PBS buffer, and HRP conjugated anti-Rabbit IgG should be diluted in 1: 50,000 - 100,000 as secondary antibody.

Comment: Target Species of Antibody: Human

Restrictions: For Research Use only

Handling

Format: Lyophilized

Reconstitution: Distilled water

Concentration: Lot specific

Buffer: Lyophilized from PBS with 2 % sucrose

Handling Advice: Avoid repeat freeze-thaw cycles.

Storage: 4 °C, -20 °C

Storage Comment: Long term: -20°C, the use of 50% glycerol is recommended if storing aliquots in -20°C for long term use (up to 1 year)

Handling

Short term (less than 1 week): 4°C. Avoid freeze-thaw cycles.

Images

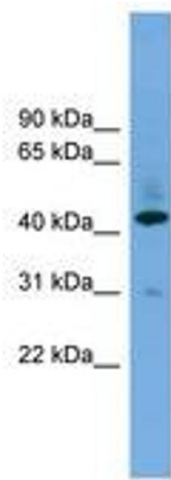


Image 1.