



[Go to Product page](#)

Datasheet for ABIN6744778  
**anti-ATP8B2 antibody (N-Term)**

1 Image

Overview

Quantity:	100 µL
Target:	ATP8B2
Binding Specificity:	N-Term
Reactivity:	Human, Mouse, Cow, Rabbit, Dog, Rat, Guinea Pig, Zebrafish (Danio rerio), Horse, Monkey, Bat, Pig
Host:	Rabbit
Clonality:	Polyclonal
Conjugate:	This ATP8B2 antibody is un-conjugated
Application:	Western Blotting (WB)

Product Details

Immunogen:	Synthetic peptide from N-Terminus of human ATP8B2 (P98198, NP_001005855). Percent identity by BLAST analysis: Human, Gorilla, Orangutan, Gibbon, Monkey, Galago, Marmoset, Mouse, Rat, Elephant, Dog, Bovine, Bat, Rabbit, Horse, Pig, Opossum, Guinea pig, Stickleback, Zebrafish (100%).  Type of Immunogen: Synthetic peptide
Specificity:	Human ATP8B2
Predicted Reactivity:	Percent identity by BLAST analysis: Human, Mouse, Rat, Dog, Bovine, Rabbit, Horse, Pig, Guinea pig, Zebrafish (100%).
Purification:	Immunoaffinity purified

## Target Details

---

Target:	ATP8B2
Alternative Name:	ATP8B2 ( <a href="#">ATP8B2 Products</a> )
Background:	Name/Gene ID: ATP8B2 Subfamily: ATPase - P type, type IV Family: Transporter  Synonyms: ATP8B2
Gene ID:	57198
NCBI Accession:	<a href="#">NP_001005855</a>
UniProt:	<a href="#">P98198</a>

## Application Details

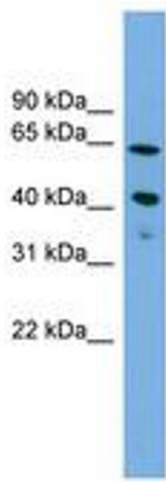
---

Application Notes:	Approved: WB (0.2 - 1 µg/mL)  Usage: Western Blot: Suggested dilution at 1 µg/mL in 5 % skim milk / PBS buffer, and HRP conjugated anti-Rabbit IgG should be diluted in 1: 50,000 - 100,000 as secondary antibody.
Comment:	Target Species of Antibody: Human
Restrictions:	For Research Use only

## Handling

---

Format:	Lyophilized
Reconstitution:	Distilled water
Concentration:	Lot specific
Buffer:	Lyophilized from PBS with 2 % sucrose
Handling Advice:	Avoid repeat freeze-thaw cycles.
Storage:	4 °C,-20 °C
Storage Comment:	Long term: -20°C, the use of 50% glycerol is recommended if storing aliquots in -20°C for long term use (up to 1 year) Short term (less than 1 week): 4°C. Avoid freeze-thaw cycles.



**Image 1.**