

Datasheet for ABIN6744781
anti-CRLF2 antibody (AA 71-120)[Go to Product page](#)

1 Image

Overview

Quantity:	100 µL
Target:	CRLF2
Binding Specificity:	AA 71-120
Reactivity:	Human
Host:	Rabbit
Clonality:	Polyclonal
Conjugate:	This CRLF2 antibody is un-conjugated
Application:	Western Blotting (WB)

Product Details

Immunogen:	Synthetic peptide located between aa71-120 of human CRLF2 (Q5G7M1, NP_001012288). Percent identity by BLAST analysis: Human, Gibbon (100%). Type of Immunogen: Synthetic peptide
Specificity:	Human CRLF2
Predicted Reactivity:	Percent identity by BLAST analysis: Human (100%).
Purification:	Immunoaffinity purified

Target Details

Target:	CRLF2
Alternative Name:	CRLF2 / TSLPR (CRLF2 Products)

Target Details

Background:	Name/Gene ID: CRLF2 Synonyms: CRLF2, IL-XR, ILXR, p2RY8/CRLF2 fusion, TSLP receptor, TSLPR, CRL2, CRLF2Y, Cytokine receptor-like 2
-------------	---

Gene ID:	64109
----------	-------

NCBI Accession:	NP_001012288
-----------------	------------------------------

UniProt:	Q9HC73
----------	------------------------

Application Details

Application Notes:	Approved: WB (0.2 - 1 µg/mL) Usage: Western Blot: Suggested dilution at 1 µg/mL in 5 % skim milk / PBS buffer, and HRP conjugated anti-Rabbit IgG should be diluted in 1: 50,000 - 100,000 as secondary antibody.
--------------------	--

Comment:	Target Species of Antibody: Human
----------	-----------------------------------

Restrictions:	For Research Use only
---------------	-----------------------

Handling

Format:	Lyophilized
Reconstitution:	Distilled water
Concentration:	Lot specific
Buffer:	Lyophilized from PBS with 2 % sucrose

Handling Advice:	Avoid repeat freeze-thaw cycles.
------------------	----------------------------------

Storage:	4 °C,-20 °C
----------	-------------

Storage Comment:	Long term: -20°C, the use of 50% glycerol is recommended if storing aliquots in -20°C for long term use (up to 1 year) Short term (less than 1 week): 4°C. Avoid freeze-thaw cycles.
------------------	---

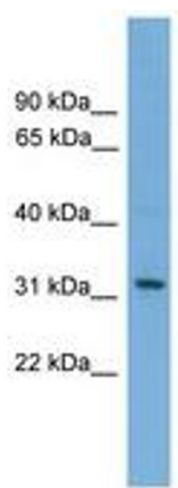


Image 1.