



Datasheet for ABIN6744782
anti-MCART6 antibody (AA 179-228)



[Go to Product page](#)

1 Image

Overview

Quantity:	100 µL
Target:	MCART6
Binding Specificity:	AA 179-228
Reactivity:	Human, Rabbit, Cow, Dog, Guinea Pig, Monkey
Host:	Rabbit
Clonality:	Polyclonal
Conjugate:	This MCART6 antibody is un-conjugated
Application:	Western Blotting (WB)

Product Details

Immunogen:	Synthetic peptide located between aa179-228 of human SLC25A53 (Q5H9E4, NP_001012773). Percent identity by BLAST analysis: Human, Chimpanzee, Gorilla, Gibbon, Monkey, Marmoset, Dog, Guinea pig (100%), Mouse, Rat, Hamster, Elephant, Bat (92%), Bovine, Rabbit, Horse, Pig (85%), Opossum (84%). Type of Immunogen: Synthetic peptide
Specificity:	Human MCART6
Predicted Reactivity:	Percent identity by BLAST analysis: Dog, Guinea pig (100%) Mouse (92%) Bovine, Rabbit (85%).
Purification:	Immunoaffinity purified

Target Details

Target:	MCART6
Alternative Name:	SLC25A53 / MCART6 (MCART6 Products)
Background:	Name/Gene ID: SLC25A53 Synonyms: SLC25A53, MCART6
Gene ID:	401612
NCBI Accession:	NP_001012773
UniProt:	Q5H9E4

Application Details

Application Notes:	Approved: WB (0.2 - 1 µg/mL) Usage: Western Blot: Suggested dilution at 1 µg/mL in 5 % skim milk / PBS buffer, and HRP conjugated anti-Rabbit IgG should be diluted in 1: 50,000 - 100,000 as secondary antibody.
Comment:	Target Species of Antibody: Human
Restrictions:	For Research Use only

Handling

Format:	Lyophilized
Reconstitution:	Distilled water
Concentration:	Lot specific
Buffer:	Lyophilized from PBS with 2 % sucrose
Handling Advice:	Avoid repeat freeze-thaw cycles.
Storage:	4 °C, -20 °C
Storage Comment:	Long term: -20°C, the use of 50% glycerol is recommended if storing aliquots in -20°C for long term use (up to 1 year) Short term (less than 1 week): 4°C. Avoid freeze-thaw cycles.

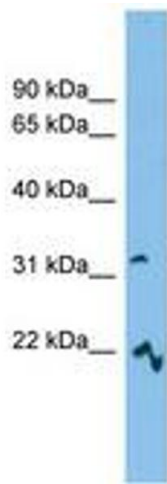


Image 1.