



[Go to Product page](#)

Datasheet for ABIN6744784

anti-LRRC66 antibody (AA 575-624)

1 Image

Overview

Quantity:	100 µL
Target:	LRRC66
Binding Specificity:	AA 575-624
Reactivity:	Human
Host:	Rabbit
Clonality:	Polyclonal
Conjugate:	This LRRC66 antibody is un-conjugated
Application:	Western Blotting (WB)

Product Details

Immunogen:	Synthetic peptide located between aa575-624 of human LRRC66 (Q68CR7, NP_001019782). Percent identity by BLAST analysis: Human, Chimpanzee, Gorilla, Gibbon (100%), Monkey (92%), Marmoset (85%). Type of Immunogen: Synthetic peptide
Specificity:	Human LRRC66
Predicted Reactivity:	Percent identity by BLAST analysis:
Purification:	Immunoaffinity purified

Target Details

Target:	LRRC66
---------	--------

Target Details

Alternative Name: [LRR66 \(LRR66 Products\)](#)

Background: Name/Gene ID: LRR66

Synonyms: LRR66

Gene ID: 339977

NCBI Accession: [NP_001019782](#)

UniProt: [Q68CR7](#)

Application Details

Application Notes: Approved: WB (0.2 - 1 µg/mL)

Usage: Western Blot: Suggested dilution at 1 µg/mL in 5 % skim milk / PBS buffer, and HRP conjugated anti-Rabbit IgG should be diluted in 1: 50,000 - 100,000 as secondary antibody.

Comment: Target Species of Antibody: Human

Restrictions: For Research Use only

Handling

Format: Lyophilized

Reconstitution: Distilled water

Concentration: Lot specific

Buffer: Lyophilized from PBS with 2 % sucrose

Handling Advice: Avoid repeat freeze-thaw cycles.

Storage: 4 °C, -20 °C

Storage Comment: Long term: -20°C, the use of 50% glycerol is recommended if storing aliquots in -20°C for long term use (up to 1 year)

Short term (less than 1 week): 4°C. Avoid freeze-thaw cycles.

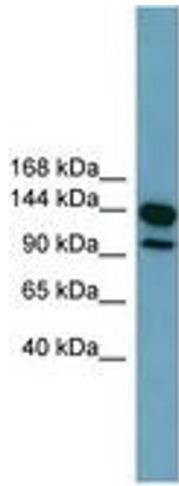


Image 1.