



[Go to Product page](#)

Datasheet for ABIN6744788
anti-CLCC1 antibody (AA 71-120)

1 Image

Overview

Quantity:	100 µL
Target:	CLCC1
Binding Specificity:	AA 71-120
Reactivity:	Human, Rat, Mouse, Dog, Cow, Rabbit, Guinea Pig, Horse, Pig, Monkey
Host:	Rabbit
Clonality:	Polyclonal
Conjugate:	This CLCC1 antibody is un-conjugated
Application:	Western Blotting (WB)

Product Details

Immunogen:	Synthetic peptide located between aa71-120 of human CLCC1 (Q96S66, NP_001041675). Percent identity by BLAST analysis: Human, Chimpanzee, Gorilla, Gibbon, Monkey, Galago, Marmoset, Mouse, Rat, Elephant, Dog, Bovine, Rabbit, Horse, Pig, Guinea pig (100%), Bat, Platypus (92%). Type of Immunogen: Synthetic peptide
Specificity:	Human CLCC1
Predicted Reactivity:	Percent identity by BLAST analysis: Human, Mouse, Rat, Dog, Bovine, Rabbit, Horse, Pig, Guinea pig (100%).
Purification:	Immunoaffinity purified

Target Details

Target:	CLCC1
Alternative Name:	CLCC1 (CLCC1 Products)
Background:	Name/Gene ID: CLCC1 Subfamily: Chloride channel - other Family: Ion Channel Synonyms: CLCC1, Chloride channel CLIC-like 1, KIAA0761, MCLC, Mid1-related chloride channel, RP11-475E11.6
Gene ID:	23155
NCBI Accession:	NP_001041675
UniProt:	Q96S66
Pathways:	SARS-CoV-2 Protein Interactome , The Global Phosphorylation Landscape of SARS-CoV-2 Infection

Application Details

Application Notes:	Approved: WB (0.2 - 1 µg/mL) Usage: Western Blot: Suggested dilution at 1 µg/mL in 5 % skim milk / PBS buffer, and HRP conjugated anti-Rabbit IgG should be diluted in 1: 50,000 - 100,000 as secondary antibody.
Comment:	Target Species of Antibody: Human
Restrictions:	For Research Use only

Handling

Format:	Lyophilized
Reconstitution:	Distilled water
Concentration:	Lot specific
Buffer:	Lyophilized from PBS with 2 % sucrose
Handling Advice:	Avoid repeat freeze-thaw cycles.
Storage:	4 °C,-20 °C
Storage Comment:	Long term: -20°C, the use of 50% glycerol is recommended if storing aliquots in -20°C for long

Handling

term use (up to 1 year)

Short term (less than 1 week): 4°C. Avoid freeze-thaw cycles.

Images

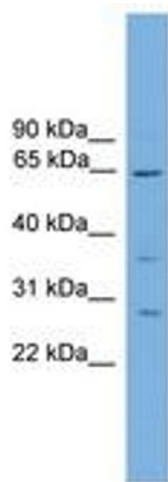


Image 1.