

Datasheet for ABIN6744789  
**anti-SDK1 antibody (AA 467-516)**



[Go to Product page](#)

1 Image

## Overview

Quantity:	100 µL
Target:	SDK1
Binding Specificity:	AA 467-516
Reactivity:	Human, Cow, Dog, Guinea Pig, Horse
Host:	Rabbit
Clonality:	Polyclonal
Conjugate:	This SDK1 antibody is un-conjugated
Application:	Western Blotting (WB)

## Product Details

Immunogen:	Synthetic peptide located between aa467-516 of human SDK1 (Q7Z5N4, NP_001073121). Percent identity by BLAST analysis: Human, Chimpanzee, Gorilla (100%), Gibbon, Rabbit (92%), Monkey, Marmoset, Elephant, Panda, Guinea pig (85%).  Type of Immunogen: Synthetic peptide
Specificity:	Human SDK1
Predicted Reactivity:	Percent identity by BLAST analysis: Human (100%) Rabbit (92%) Guinea pig (85%).
Purification:	Immunoaffinity purified

## Target Details

Target:	SDK1
---------	------

## Target Details

---

Alternative Name: [SDK1 \(SDK1 Products\)](#)

---

Background: Name/Gene ID: SDK1

Synonyms: SDK1, Sidekick homolog 1 (chicken), Protein sidekick-1

---

Gene ID: 221935

---

NCBI Accession: [NP\\_001073121](#)

---

UniProt: [Q7Z5N4](#)

---

## Application Details

---

Application Notes: Approved: WB (0.2 - 1 µg/mL)

Usage: Western Blot: Suggested dilution at 1 µg/mL in 5 % skim milk / PBS buffer, and HRP conjugated anti-Rabbit IgG should be diluted in 1: 50,000 - 100,000 as secondary antibody.

---

Comment: Target Species of Antibody: Human

---

Restrictions: For Research Use only

---

## Handling

---

Format: Lyophilized

---

Reconstitution: Distilled water

---

Concentration: Lot specific

---

Buffer: Lyophilized from PBS with 2 % sucrose

---

Handling Advice: Avoid repeat freeze-thaw cycles.

---

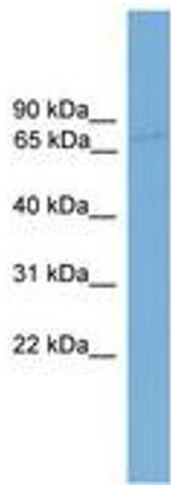
Storage: 4 °C, -20 °C

---

Storage Comment: Long term: -20°C, the use of 50% glycerol is recommended if storing aliquots in -20°C for long term use (up to 1 year)

Short term (less than 1 week): 4°C. Avoid freeze-thaw cycles.

---



**Image 1.**