



[Go to Product page](#)

Datasheet for ABIN6744797  
**anti-PIGA antibody (AA 179-228)**

1 Image

Overview

|                      |   |
|----------------------|---|
| Quantity:            | 100 µL  |
| Target:              | PIGA  |
| Binding Specificity: | AA 179-228  |
| Reactivity:          | Human, Mouse, Cow, Pig, Rabbit, Dog, Horse, Bat, Monkey |
| Host:                | Rabbit  |
| Clonality:           | Polyclonal  |
| Conjugate:           | This PIGA antibody is un-conjugated                     |
| Application:         | Western Blotting (WB)                                   |

Product Details

|                       |   |
|-----------------------|---|
| Immunogen:            | Synthetic peptide located between aa179-228 of human PIGA (P37287, NP_002632). Percent identity by BLAST analysis: Human, Chimpanzee, Gorilla, Gibbon, Monkey, Galago, Marmoset, Mouse, Elephant, Dog, Bovine, Bat, Rabbit, Horse, Pig, Opossum, Platypus, Lizard (100%), Rat, Hamster, Turkey, Zebra finch, Chicken, Zebrafish (92%), Xenopus (90%), Guinea pig, Stickleback (85%), Panda (84%).<br><br>Type of Immunogen: Synthetic peptide |
| Specificity:          | Human PIGA  |
| Predicted Reactivity: | Percent identity by BLAST analysis: Human, Mouse, Dog, Bovine, Rabbit, Horse, Pig (100%) Rat, Chicken, Zebrafish (92%).   |
| Purification:         | Immunoaffinity purified   |

## Target Details

---

|                   |   |
|-------------------|---|
| Target:           | PIGA  |
| Alternative Name: | GPI3 / PIGA ( <a href="#">PIGA Products</a> )   |
| Background:       | Name/Gene ID: PIGA<br><br>Synonyms: PIGA, GPI anchor biosynthesis, GPI3, PIG-A, GlcNAc-PI synthesis protein, MCAHS2 |
| Gene ID:          | 5277  |
| NCBI Accession:   | <a href="#">NP_002632</a>   |
| UniProt:          | <a href="#">P37287</a>  |
| Pathways:         | <a href="#">Inositol Metabolic Process</a>  |

## Application Details

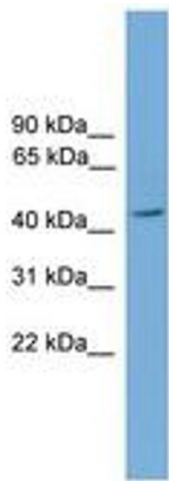
---

|                    |  |
|--------------------|--|
| Application Notes: | Approved: WB (0.2 - 1 µg/mL)<br><br>Usage: Western Blot: Suggested dilution at 1 µg/mL in 5 % skim milk / PBS buffer, and HRP conjugated anti-Rabbit IgG should be diluted in 1: 50,000 - 100,000 as secondary antibody. |
| Comment:           | Target Species of Antibody: Human  |
| Restrictions:      | For Research Use only  |

## Handling

---

|                  |   |
|------------------|---|
| Format:          | Lyophilized   |
| Reconstitution:  | Distilled water   |
| Concentration:   | Lot specific  |
| Buffer:          | Lyophilized from PBS with 2 % sucrose   |
| Handling Advice: | Avoid repeat freeze-thaw cycles.  |
| Storage:         | 4 °C,-20 °C   |
| Storage Comment: | Long term: -20°C, the use of 50% glycerol is recommended if storing aliquots in -20°C for long term use (up to 1 year)<br><br>Short term (less than 1 week): 4°C. Avoid freeze-thaw cycles. |



**Image 1.**