



[Go to Product page](#)

Datasheet for ABIN6744806  
**anti-B4GALT3 antibody (AA 71-120)**

1 Image

Overview

Quantity:	100 µL
Target:	B4GALT3
Binding Specificity:	AA 71-120
Reactivity:	Human, Rat, Mouse, Cow, Dog, Guinea Pig, Horse, Hamster, Monkey, Bat
Host:	Rabbit
Clonality:	Polyclonal
Conjugate:	This B4GALT3 antibody is un-conjugated
Application:	Western Blotting (WB)

Product Details

Immunogen:	Synthetic peptide located between aa71-120 of human B4GALT3 (O60512, NP_003770). Percent identity by BLAST analysis: Human, Chimpanzee, Gorilla, Orangutan, Gibbon, Monkey, Galago, Marmoset, Mouse, Rat, Hamster, Elephant, Panda, Dog, Bovine, Bat, Horse, Guinea pig (100%), Rabbit, Pig (92%).  Type of Immunogen: Synthetic peptide
Specificity:	Human B4GALT3
Predicted Reactivity:	Percent identity by BLAST analysis: Human, Mouse, Dog (100%) Rabbit (92%).
Purification:	Immunoaffinity purified

## Target Details

---

Target:	B4GALT3
Alternative Name:	B4GALT3 ( <a href="#">B4GALT3 Products</a> )
Background:	Name/Gene ID: B4GALT3  Synonyms: B4GALT3, B4Gal-T3, Beta-1,4-GalTase 3, Beta4Gal-T3
Gene ID:	8703
NCBI Accession:	<a href="#">NP_003770</a>
UniProt:	<a href="#">O60512</a>
Pathways:	<a href="#">Glycosaminoglycan Metabolic Process</a>

## Application Details

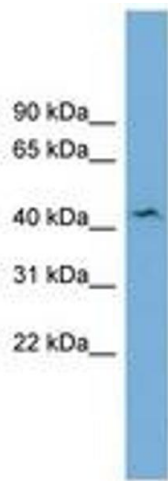
---

Application Notes:	Approved: WB (0.2 - 1 µg/mL)  Usage: Western Blot: Suggested dilution at 1 µg/mL in 5 % skim milk / PBS buffer, and HRP conjugated anti-Rabbit IgG should be diluted in 1: 50,000 - 100,000 as secondary antibody.
Comment:	Target Species of Antibody: Human
Restrictions:	For Research Use only

## Handling

---

Format:	Lyophilized
Reconstitution:	Distilled water
Concentration:	Lot specific
Buffer:	Lyophilized from PBS with 2 % sucrose
Handling Advice:	Avoid repeat freeze-thaw cycles.
Storage:	4 °C, -20 °C
Storage Comment:	Long term: -20°C, the use of 50% glycerol is recommended if storing aliquots in -20°C for long term use (up to 1 year)  Short term (less than 1 week): 4°C. Avoid freeze-thaw cycles.



**Image 1.**