



[Go to Product page](#)

Datasheet for ABIN6744809

anti-CBR1 antibody (AA 107-156)

1 Image

Overview

Quantity:	100 µL
Target:	CBR1
Binding Specificity:	AA 107-156
Reactivity:	Human, Mouse, Pig, Rabbit, Cow, Hamster
Host:	Rabbit
Clonality:	Polyclonal
Conjugate:	This CBR1 antibody is un-conjugated
Application:	Western Blotting (WB)

Product Details

Immunogen:	Synthetic peptide located between aa107-156 of human CBR1 (P16152, NP_001748). Percent identity by BLAST analysis: Human, Chimpanzee, Gorilla, Orangutan, Gibbon, Galago, Mouse, Hamster, Elephant, Bovine, Pig, Platypus (100%), Monkey, Marmoset, Rat, Dog, Horse, Guinea pig, Chicken, Xenopus (92%), Opossum, Zebra finch, Salmon, Sablefish, Stickleback, Medaka (85%). Type of Immunogen: Synthetic peptide
Specificity:	Human CBR1
Predicted Reactivity:	Percent identity by BLAST analysis: Human, Mouse, Bovine, Pig (100%) Rat, Guinea pig, Chicken, Xenopus (92%).
Purification:	Immunoaffinity purified

Target Details

Target:	CBR1
Alternative Name:	CBR / CBR1 (CBR1 Products)
Background:	Name/Gene ID: CBR1 Synonyms: CBR1, Carbonyl reductase 1, Carbonyl reductase (NADPH) 1, HCBR1, Prostaglandin 9-ketoreductase, SDR21C1, Carbonyl reductase [NADPH] 1, CBR, CRN, Prostaglandin-E(2) 9-reductase
Gene ID:	873
NCBI Accession:	NP_001748
UniProt:	P16152

Application Details

Application Notes:	Approved: WB (0.2 - 1 µg/mL) Usage: Western Blot: Suggested dilution at 1 µg/mL in 5 % skim milk / PBS buffer, and HRP conjugated anti-Rabbit IgG should be diluted in 1: 50,000 - 100,000 as secondary antibody.
Comment:	Target Species of Antibody: Human
Restrictions:	For Research Use only

Handling

Format:	Lyophilized
Reconstitution:	Distilled water
Concentration:	Lot specific
Buffer:	Lyophilized from PBS with 2 % sucrose
Handling Advice:	Avoid repeat freeze-thaw cycles.
Storage:	4 °C, -20 °C
Storage Comment:	Long term: -20°C, the use of 50% glycerol is recommended if storing aliquots in -20°C for long term use (up to 1 year) Short term (less than 1 week): 4°C. Avoid freeze-thaw cycles.

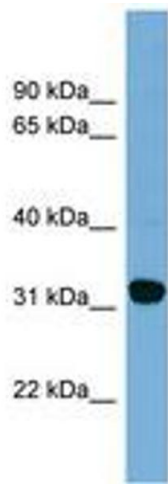


Image 1.