



[Go to Product page](#)

Datasheet for ABIN6744810  
**anti-RIPK4 antibody (AA 179-228)**

1 Image

Overview

Quantity:	100 µL
Target:	RIPK4
Binding Specificity:	AA 179-228
Reactivity:	Human, Mouse, Rat, Guinea Pig, Cow, Dog, Horse, Rabbit, Bat, Monkey, Pig
Host:	Rabbit
Clonality:	Polyclonal
Conjugate:	This RIPK4 antibody is un-conjugated
Application:	Western Blotting (WB)

Product Details

Immunogen:	Synthetic peptide located between aa179-228 of human RIPK4 (Q9H4D1, NP_065690). Percent identity by BLAST analysis: Human, Chimpanzee, Gorilla, Gibbon, Monkey, Galago, Marmoset, Mouse, Rat, Elephant, Panda, Dog, Bovine, Bat, Rabbit, Horse, Pig, Guinea pig (100%), Opossum, Zebra finch, Chicken, Platypus, Lizard, Xenopus (84%).  Type of Immunogen: Synthetic peptide
Specificity:	Human RIPK4
Predicted Reactivity:	Percent identity by BLAST analysis: Human, Mouse, Rat, Dog, Bovine, Rabbit, Horse, Guinea pig (100%) Chicken, Xenopus (84%).
Purification:	Immunoaffinity purified

## Target Details

---

Target:	RIPK4
Alternative Name:	RIP4 / ANKRD3 ( <a href="#">RIPK4 Products</a> )
Background:	Name/Gene ID: RIPK4 Subfamily: RIP Family: Protein Kinase  Synonyms: RIPK4, ANKK2, Ankyrin repeat domain 3, ANKRD3, DIK, NKRD3, RIP4, PKK, PPS2
Gene ID:	54101
NCBI Accession:	<a href="#">NP_065690</a>
UniProt:	<a href="#">P57078</a>

## Application Details

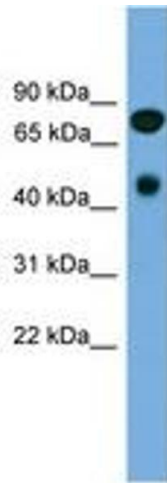
---

Application Notes:	Approved: WB (0.2 - 1 µg/mL)  Usage: Western Blot: Suggested dilution at 1 µg/mL in 5 % skim milk / PBS buffer, and HRP conjugated anti-Rabbit IgG should be diluted in 1: 50,000 - 100,000 as secondary antibody.
Comment:	Target Species of Antibody: Human
Restrictions:	For Research Use only

## Handling

---

Format:	Lyophilized
Reconstitution:	Distilled water
Concentration:	Lot specific
Buffer:	Lyophilized from PBS with 2 % sucrose
Handling Advice:	Avoid repeat freeze-thaw cycles.
Storage:	4 °C,-20 °C
Storage Comment:	Long term: -20°C, the use of 50% glycerol is recommended if storing aliquots in -20°C for long term use (up to 1 year) Short term (less than 1 week): 4°C. Avoid freeze-thaw cycles.



**Image 1.**