



[Go to Product page](#)

Datasheet for ABIN6744812
anti-LRRC3 antibody (AA 107-156)

1 Image

Overview

Quantity:	100 µL
Target:	LRRC3
Binding Specificity:	AA 107-156
Reactivity:	Human, Horse, Mouse, Rabbit, Rat, Bat
Host:	Rabbit
Clonality:	Polyclonal
Conjugate:	This LRRC3 antibody is un-conjugated
Application:	Western Blotting (WB)

Product Details

Immunogen:	Synthetic peptide located between aa107-156 of human LRRC3 (Q9BY71, NP_112153). Percent identity by BLAST analysis: Human, Chimpanzee, Gorilla, Monkey, Galago, Mouse, Rat, Panda, Bat, Rabbit, Horse (100%), Marmoset, Bovine, Guinea pig (92%), Elephant, Platypus (85%). Type of Immunogen: Synthetic peptide
Specificity:	Human LRRC3
Predicted Reactivity:	Percent identity by BLAST analysis: Human, Mouse, Rat (100%) Bovine (92%).
Purification:	Immunoaffinity purified

Target Details

Target:	LRRC3
---------	-------

Target Details

Alternative Name:	LRR3 (LRR3 Products)
Background:	Name/Gene ID: LRR3 Synonyms: LRR3, C21orf102, LRR3A
Gene ID:	81543
NCBI Accession:	NP_112153
UniProt:	Q9BY71

Application Details

Application Notes:	Approved: WB (0.2 - 1 µg/mL) Usage: Western Blot: Suggested dilution at 1 µg/mL in 5 % skim milk / PBS buffer, and HRP conjugated anti-Rabbit IgG should be diluted in 1: 50,000 - 100,000 as secondary antibody.
Comment:	Target Species of Antibody: Human
Restrictions:	For Research Use only

Handling

Format:	Lyophilized
Reconstitution:	Distilled water
Concentration:	Lot specific
Buffer:	Lyophilized from PBS with 2 % sucrose
Handling Advice:	Avoid repeat freeze-thaw cycles.
Storage:	4 °C,-20 °C
Storage Comment:	Long term: -20°C, the use of 50% glycerol is recommended if storing aliquots in -20°C for long term use (up to 1 year) Short term (less than 1 week): 4°C. Avoid freeze-thaw cycles.

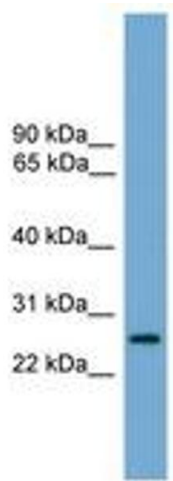


Image 1.