



[Go to Product page](#)

Datasheet for ABIN6744817

anti-Adenylate Kinase 2 antibody (AA 143-192)

1 Image

Overview

Quantity:	100 µL
Target:	Adenylate Kinase 2 (AK2)
Binding Specificity:	AA 143-192
Reactivity:	Human, Mouse, Rat, Zebrafish (Danio rerio), Guinea Pig, Rabbit, Horse, Bat, Chicken, Drosophila melanogaster, Monkey
Host:	Rabbit
Clonality:	Polyclonal
Conjugate:	This Adenylate Kinase 2 antibody is un-conjugated
Application:	Western Blotting (WB)

Product Details

Immunogen:	Synthetic peptide located between aa143-192 of human AK2 (P54819, NP_001616). Percent identity by BLAST analysis: Human, Chimpanzee, Gorilla, Orangutan, Monkey, Galago, Marmoset, Mouse, Rat, Elephant, Bat, Rabbit, Horse, Opossum, Guinea pig, Turkey, Zebra finch, Chicken, Platypus, Stickleback, Zebrafish, Drosophila, Nematode (100%), Gibbon, Dog, Bovine, Xenopus, Catfish, Sea squirt, Slime mold (92%), Salmon, Mosquito (91%), Beetle (90%). Type of Immunogen: Synthetic peptide
Specificity:	Human AK2
Predicted Reactivity:	Percent identity by BLAST analysis: Human, Chicken (100%) Dog (92%).
Purification:	Immunoaffinity purified

Target Details

Target:	Adenylate Kinase 2 (AK2)
Alternative Name:	AK2 / Adenylate Kinase 2 (AK2 Products)
Background:	Name/Gene ID: AK2 Synonyms: AK2, Adenylate kinase 2, ADK2, AK 2, ATP-AMP transphosphorylase 2
Gene ID:	204
NCBI Accession:	NP_001616
UniProt:	P54819
Pathways:	Nucleotide Phosphorylation , Ribonucleoside Biosynthetic Process

Application Details

Application Notes:	Approved: WB (0.2 - 1 µg/mL) Usage: Western Blot: Suggested dilution at 1 µg/mL in 5 % skim milk / PBS buffer, and HRP conjugated anti-Rabbit IgG should be diluted in 1: 50,000 - 100,000 as secondary antibody.
Comment:	Target Species of Antibody: Human
Restrictions:	For Research Use only

Handling

Format:	Lyophilized
Reconstitution:	Distilled water
Concentration:	Lot specific
Buffer:	Lyophilized from PBS with 2 % sucrose
Handling Advice:	Avoid repeat freeze-thaw cycles.
Storage:	4 °C, -20 °C
Storage Comment:	Long term: -20°C, the use of 50% glycerol is recommended if storing aliquots in -20°C for long term use (up to 1 year) Short term (less than 1 week): 4°C. Avoid freeze-thaw cycles.

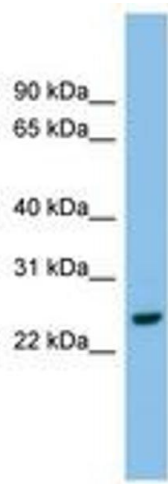


Image 1.