



Datasheet for ABIN6744823  
**anti-NT5DC2 antibody (AA 107-156)**



[Go to Product page](#)

1 Image

Overview

Quantity:	100 µL
Target:	NT5DC2
Binding Specificity:	AA 107-156
Reactivity:	Human, Mouse, Cow, Rabbit, Dog, Zebrafish (Danio rerio), Guinea Pig, Horse, Monkey, Bat, Pig
Host:	Rabbit
Clonality:	Polyclonal
Conjugate:	This NT5DC2 antibody is un-conjugated
Application:	Western Blotting (WB)

Product Details

Immunogen:	Synthetic peptide located between aa107-156 of human NT5DC2 (Q9H857, NP_075059). Percent identity by BLAST analysis: Human, Chimpanzee, Gorilla, Gibbon, Monkey, Galago, Marmoset, Elephant, Dog, Bovine, Bat, Rabbit, Horse, Pig, Guinea pig (100%), Rat, Opossum, Turkey, Zebra finch, Chicken, Platypus, Xenopus (92%), Mouse, Lizard, Salmon, Stickleback (85%).  Type of Immunogen: Synthetic peptide
Specificity:	Human NT5DC2
Predicted Reactivity:	Percent identity by BLAST analysis: Human, Dog, Rabbit, Horse, Pig (100%) Chicken, Xenopus (92%) Mouse (85%).
Purification:	Immunoaffinity purified

## Target Details

---

Target:	NT5DC2
Alternative Name:	NT5DC2 ( <a href="#">NT5DC2 Products</a> )
Background:	Name/Gene ID: NT5DC2  Synonyms: NT5DC2
Gene ID:	64943
NCBI Accession:	<a href="#">NP_075059</a>
UniProt:	<a href="#">Q9H857</a>

## Application Details

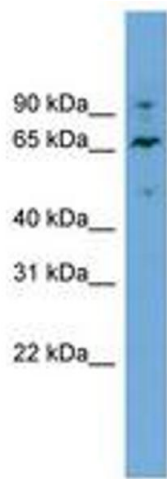
---

Application Notes:	Approved: WB (0.2 - 1 µg/mL)  Usage: Western Blot: Suggested dilution at 1 µg/mL in 5 % skim milk / PBS buffer, and HRP conjugated anti-Rabbit IgG should be diluted in 1: 50,000 - 100,000 as secondary antibody.
Comment:	Target Species of Antibody: Human
Restrictions:	For Research Use only

## Handling

---

Format:	Lyophilized
Reconstitution:	Distilled water
Concentration:	Lot specific
Buffer:	Lyophilized from PBS with 2 % sucrose
Handling Advice:	Avoid repeat freeze-thaw cycles.
Storage:	4 °C, -20 °C
Storage Comment:	Long term: -20°C, the use of 50% glycerol is recommended if storing aliquots in -20°C for long term use (up to 1 year)  Short term (less than 1 week): 4°C. Avoid freeze-thaw cycles.



**Image 1.**