



[Go to Product page](#)

Datasheet for ABIN6744836
anti-PHF5A antibody (C-Term)

1 Image

Overview

| | |
|----------------------|--|
| Quantity: | 100 µL |
| Target: | PHF5A |
| Binding Specificity: | C-Term |
| Reactivity: | Human, Mouse, Rat, Guinea Pig, Horse, Rabbit, Cow, Dog, Zebrafish (Danio rerio), Bat, Chicken, Xenopus laevis, Drosophila melanogaster |
| Host: | Rabbit |
| Clonality: | Polyclonal |
| Conjugate: | This PHF5A antibody is un-conjugated |
| Application: | Western Blotting (WB) |

Product Details

| | |
|-----------------------|--|
| Immunogen: | Synthetic peptide from C-Terminus of human PHF5A (Q7RTV0, NP_116147). Percent identity by BLAST analysis: Human, Chimpanzee, Gorilla, Mouse, Rat, Elephant, Dog, Bovine, Bat, Rabbit, Horse, Guinea pig, Turkey, Chicken, Platypus, Lizard, Xenopus, Seabass, Catfish, Salmon, Stickleback, Zebrafish, Drosophila, Slime mold, Rice, Arabidopsis (100%), Frog, Beetle (92%). Type of Immunogen: Synthetic peptide |
| Specificity: | Human PHF5A |
| Predicted Reactivity: | Percent identity by BLAST analysis: Human, Mouse, Rat, Dog, Bovine, Chicken, Xenopus, Zebrafish (100%). |
| Purification: | Immunoaffinity purified |

Target Details

| | |
|-------------------|---|
| Target: | PHF5A |
| Alternative Name: | PHF5A / INI (PHF5A Products) |
| Background: | Name/Gene ID: PHF5A Synonyms: PHF5A, BK223H9.2, INI, PHD finger protein 5A, SF3b14b, PHD-finger 5a, Rds3, SAP14b |
| Gene ID: | 84844 |
| NCBI Accession: | NP_116147 |
| UniProt: | Q7RTV0 |

Application Details

| | |
|--------------------|--|
| Application Notes: | Approved: WB (0.2 - 1 µg/mL) Usage: Western Blot: Suggested dilution at 1 µg/mL in 5 % skim milk / PBS buffer, and HRP conjugated anti-Rabbit IgG should be diluted in 1: 50,000 - 100,000 as secondary antibody. |
| Comment: | Target Species of Antibody: Human |
| Restrictions: | For Research Use only |

Handling

| | |
|------------------|---|
| Format: | Lyophilized |
| Reconstitution: | Distilled water |
| Concentration: | Lot specific |
| Buffer: | Lyophilized from PBS with 2 % sucrose |
| Handling Advice: | Avoid repeat freeze-thaw cycles. |
| Storage: | 4 °C, -20 °C |
| Storage Comment: | Long term: -20°C, the use of 50% glycerol is recommended if storing aliquots in -20°C for long term use (up to 1 year) Short term (less than 1 week): 4°C. Avoid freeze-thaw cycles. |

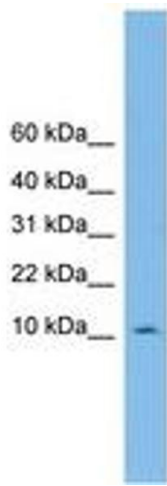


Image 1.