



Datasheet for ABIN6744841
anti-C1ORF111 antibody (AA 35-84)



[Go to Product page](#)

1 Image

Overview

Quantity:	100 µL
Target:	C1ORF111 (C1orf111)
Binding Specificity:	AA 35-84
Reactivity:	Human, Pig, Rabbit, Monkey
Host:	Rabbit
Clonality:	Polyclonal
Conjugate:	This C1ORF111 antibody is un-conjugated
Application:	Western Blotting (WB)

Product Details

Immunogen:	Synthetic peptide located between aa35-84 of human C1orf111 (Q5T0L3, NP_872387). Percent identity by BLAST analysis: Human, Gorilla, Monkey, Marmoset (100%), Horse (92%), Rabbit, Pig (85%). Type of Immunogen: Synthetic peptide
Specificity:	Human C1orf111
Predicted Reactivity:	Percent identity by BLAST analysis: Human (100%) Horse (92%) Rabbit, Pig (85%).
Purification:	Immunoaffinity purified

Target Details

Target:	C1ORF111 (C1orf111)
---------	---------------------

Target Details

Alternative Name:	C1orf111 (C1orf111 Products)
Background:	Name/Gene ID: C1orf111 Synonyms: C1orf111, RP11-565P22.3, HSD20
Gene ID:	284680
NCBI Accession:	NP_872387
UniProt:	Q5T0L3

Application Details

Application Notes:	Approved: WB (0.2 - 1 µg/mL) Usage: Western Blot: Suggested dilution at 1 µg/mL in 5 % skim milk / PBS buffer, and HRP conjugated anti-Rabbit IgG should be diluted in 1: 50,000 - 100,000 as secondary antibody.
Comment:	Target Species of Antibody: Human
Restrictions:	For Research Use only

Handling

Format:	Lyophilized
Reconstitution:	Distilled water
Concentration:	Lot specific
Buffer:	Lyophilized from PBS with 2 % sucrose
Handling Advice:	Avoid repeat freeze-thaw cycles.
Storage:	4 °C,-20 °C
Storage Comment:	Long term: -20°C, the use of 50% glycerol is recommended if storing aliquots in -20°C for long term use (up to 1 year) Short term (less than 1 week): 4°C. Avoid freeze-thaw cycles.

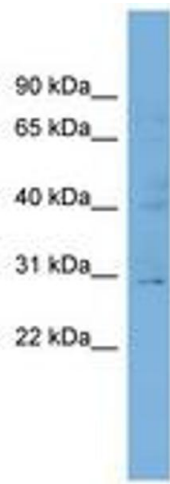


Image 1.