

Datasheet for ABIN6744844
anti-ST14 antibody (AA 323-372)



[Go to Product page](#)

1 Image

Overview

Quantity:	100 µL
Target:	ST14
Binding Specificity:	AA 323-372
Reactivity:	Human, Rat, Cow, Guinea Pig, Horse
Host:	Rabbit
Clonality:	Polyclonal
Conjugate:	This ST14 antibody is un-conjugated
Application:	Western Blotting (WB)

Product Details

Immunogen:	Synthetic peptide located between aa323-372 of human ST14 (Q9Y5Y6, NP_068813). Percent identity by BLAST analysis: Human, Gorilla, Rat, Bovine (100%), Gibbon, Mouse, Elephant, Dog, Bat, Pig, Opossum, Platypus (92%), Drosophila (90%), Horse (85%), Galago (84%), Seabass (83%). Type of Immunogen: Synthetic peptide
Specificity:	Human ST14 / Matriptase
Predicted Reactivity:	Percent identity by BLAST analysis: Human, Bovine (100%) Mouse, Rat, Dog, Pig (92%) Horse (85%).
Purification:	Immunoaffinity purified

Target Details

Target:	ST14
Alternative Name:	ST14 / Matriptase (ST14 Products)
Background:	Name/Gene ID: ST14 Subfamily: Serine S1 Family: Protease Synonyms: ST14, Epithin, HAI, Prostamin, PRSS14, TADG15, Matriptase, MT-SP1, SNC19, TMPRSS14, MTSP1, Serine protease 14, Serine protease TADG-15, TADG-15
Gene ID:	6768
NCBI Accession:	NP_068813
UniProt:	Q9Y5Y6

Application Details

Application Notes:	Approved: WB (0.2 - 1 µg/mL) Usage: Western Blot: Suggested dilution at 1 µg/mL in 5 % skim milk / PBS buffer, and HRP conjugated anti-Rabbit IgG should be diluted in 1: 50,000 - 100,000 as secondary antibody.
Comment:	Target Species of Antibody: Human
Restrictions:	For Research Use only

Handling

Format:	Lyophilized
Reconstitution:	Distilled water
Concentration:	Lot specific
Buffer:	Lyophilized from PBS with 2 % sucrose
Handling Advice:	Avoid repeat freeze-thaw cycles.
Storage:	4 °C, -20 °C
Storage Comment:	Long term: -20°C, the use of 50% glycerol is recommended if storing aliquots in -20°C for long term use (up to 1 year) Short term (less than 1 week): 4°C. Avoid freeze-thaw cycles.

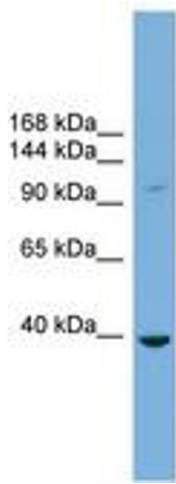


Image 1.